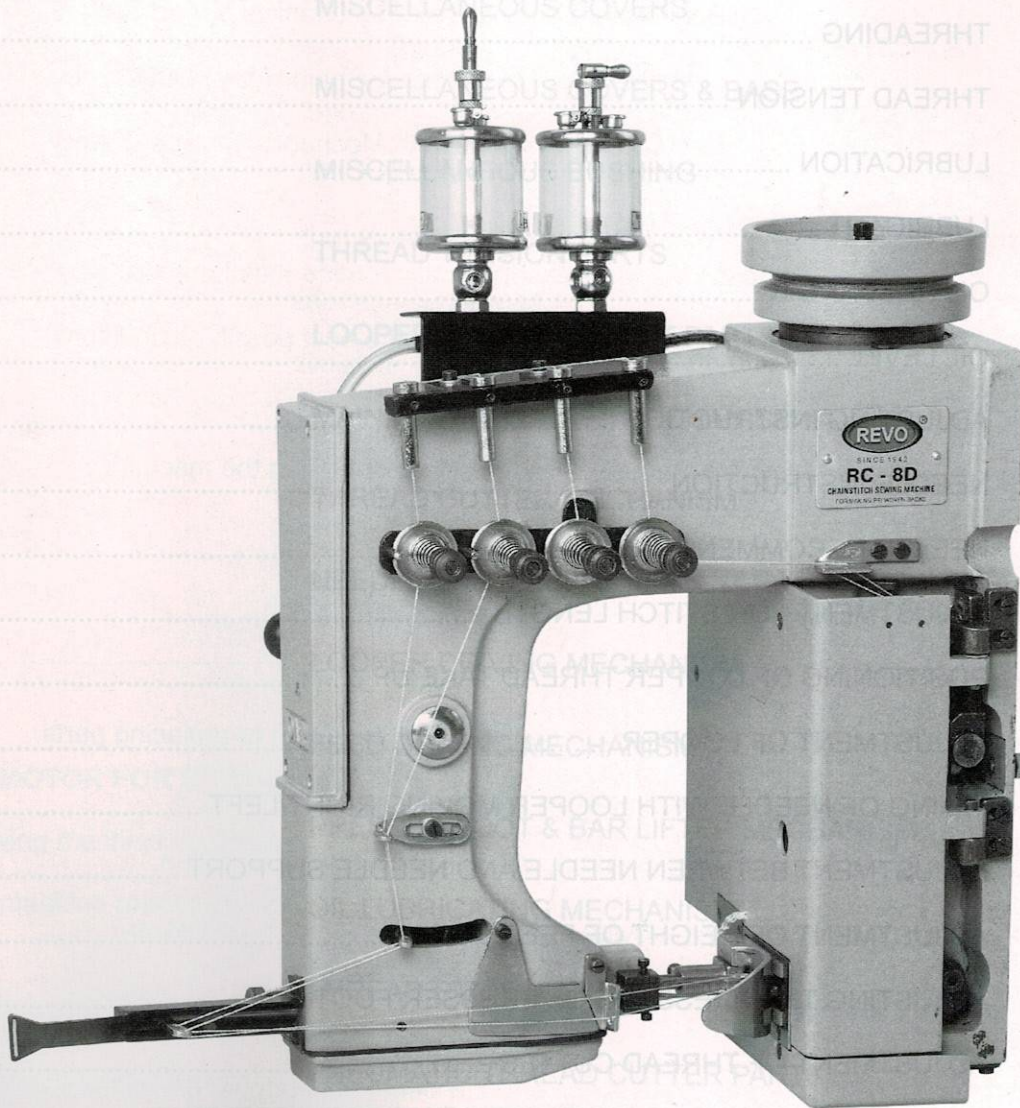


# INSTRUCTION MANUAL



SINCE 1942



## MODEL RC-8S & RC-8D

# CONTENTS

SR. NO.	DESCRIPTION	PAGE NO.
1.	INTRODUCTION & CLASSIFICATION OF MACHINE .....	2
2.	SAFETY PRECAUTIONS .....	2
3.	MAINTENANCE .....	2
4.	SPECIFICATIONS .....	3
5.	DRIVE MOTOR FOR SEWING HEAD .....	3
6.	SPEED TIMING WITH CONVEYOR .....	3
7.	THREADING .....	4
7-1.	THREAD TENSION .....	4
8.	LUBRICATION .....	5
8-1.	LUBRICANT .....	5
8-2.	OIL RESERVOIR .....	5
8-3.	OIL LEVEL .....	5
9.	ADJUSTING INSTRUCTION .....	5
9-1.	NEEDLE INSTRUCTION .....	5
9-2.	NEEDLE RECOMMENDATION .....	5
9-3.	ADJUSTMENT FOR STITCH LENGTH .....	6
9-4.	POSITIONING OF LOOPER THREAD TAKE UP .....	6
9-5.	ADJUSTMENT OF LOOPER .....	6
9-6.	TIMING OF NEEDLE WITH LOOPER MOVING RIGHT/LEFT .....	7
9-7.	ADJUSTMENT BETWEEN NEEDLE AND NEEDLE SUPPORT .....	7
9-8.	ADJUSTMENT OF HEIGHT OF FEED DOG .....	7
9-9.	ADJUSTING THE PRESSURE OF PRESSER FOOT .....	8
9-10.	ADJUSTMENT OF THREAD CUTTER .....	8
9-11.	SETTING OF NEEDLE LEVER CONNECTING ROD ASSEMBLY .....	8
10.	ORDERING PARTS, CONTENTS .....	9
11.	MACHINE PARTS LIST .....	10 - 41

# ORDERING PARTS REVO MODEL RC-8S & RC-8D

## CONTENTS

SR. NO.	DESCRIPTION	PAGE NO.
1	MISCELLANEOUS COVERS	10-11
2	MISCELLANEOUS COVERS & BASE	12-13
2A	MISCELLANEOUS BUSHING	14-15
3	THREAD TENSION PARTS	16-17
4	LOOPER THREAD EYELET PARTS	18-19
5	MAIN DRIVING SHAFT MECHANISM	20-21
5	THREAD CUTTER MECHANISM	22-23
6	NEEDLE BAR MECHANISM	24-27
7	LOOPER DRIVING MECHANISM	28-29
8	FEED DRIVING MECHANISM	30-33
9	PRESSER FOOT & BAR LIFTER MECHANISM	34-35
10	OIL LUBRICATING MECHANISM	36-37
11	THREAD STAND PARTS	38-39
12	PNEUMATIC THREAD CUTTER PARTS	40-41

# INTRODUCTION

Thank you very much for purchasing

MODEL No.	DESCRIPTION	PAGE NO.
	<b>REVO HEAVY DUTY FILLED BAGS CLOSING</b>	2
	<b>SEWING CONVEYOR HEAD</b>	2
	<b>CONTENTS</b>	2
	SPECIFICATIONS	3
RC-8S	(Single Needle, Two Thread, Chain Heavy Duty Bag Closing Machine with Mechanical thread Cutter)	3
RC-8D	(Twin Needle, Four Thread, Chain Heavy Duty Bag Closing Machine with Mechanical thread Cutter)	4
	This instruction Manual describes daily routine maintenance & Safety precautions to keep the machine in the best possible conditions.	5
	Please study this manual carefully before operating the machine.	5
<b>SAFETY PRECAUTIONS</b>		
1.	To avoid personal injury	6
2.	Always disconnect the machine from power before oiling, adjusting or replacing parts.	6
3.	Ensure covers and guards must be in position before operating machine.	7
4.	Do not tamper with safety covers, guards etc. While machine is in operation.	7
5.	Always keep hands away from the moving parts when machine is in operation.	7
<b>MAINTENANCE</b>		
1.	Keep oil wick for the lower cutter damp at all times.	8
2.	Protect machine from dust by keeping covered when not in use.	9
	MACHINE PARTS LIST	10 - 41

# SPECIFICATIONS

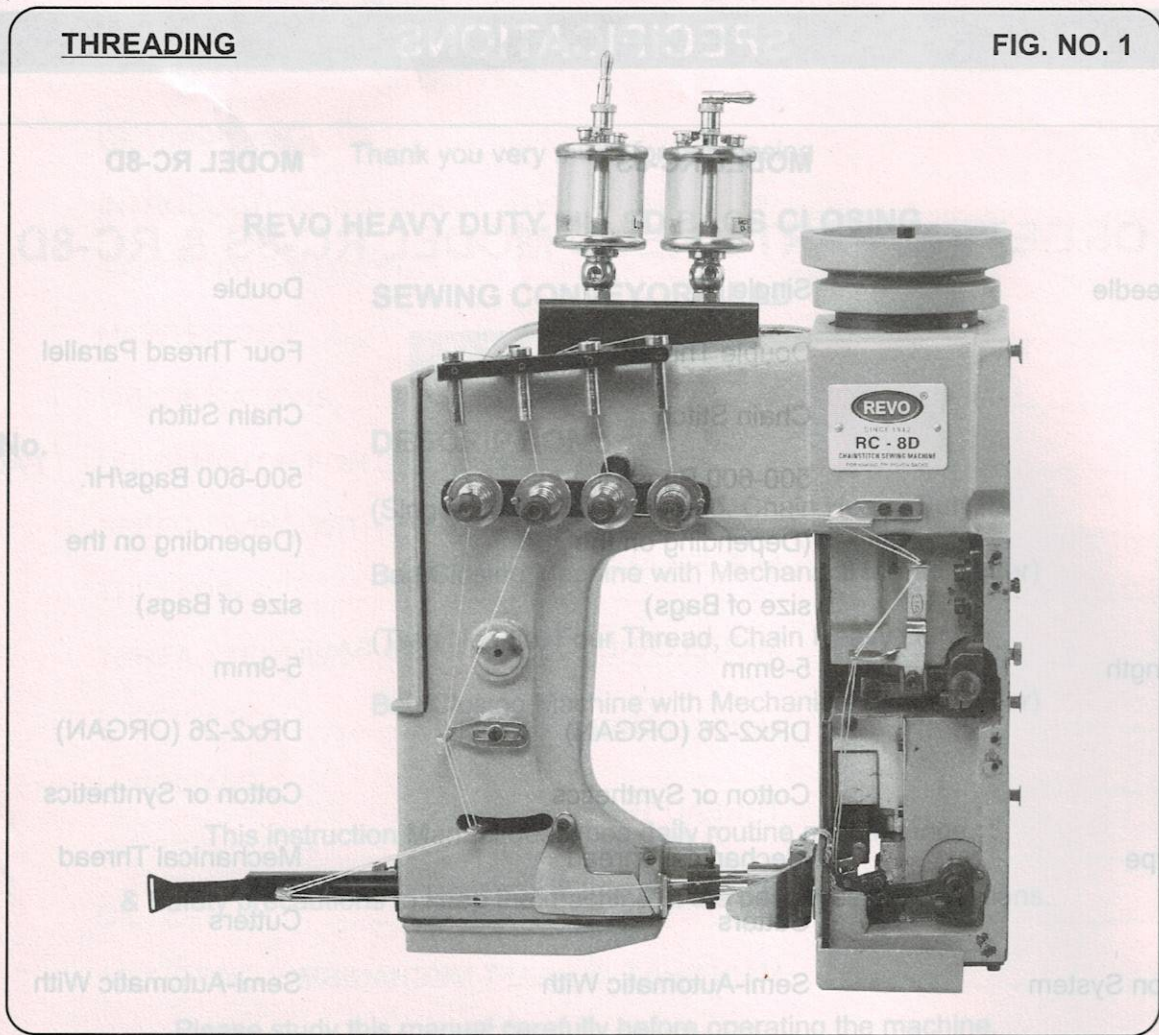
	MODEL RC-8S	MODEL RC-8D
No. Of Needle	Single	Double
Seam	Double Thread	Four Thread Parallel
Speed	Chain Stitch 500-600 Bags/Hr. (Depending on the size of Bags)	Chain Stitch 500-600 Bags/Hr. (Depending on the size of Bags)
Stitch Length	5-9mm	5-9mm
Needle	DRx2-26 (ORGAN)	DRx2-26 (ORGAN)
Thread	Cotton or Synthetics	Cotton or Synthetics
Cutter Type	Mechanical Thread Cutters	Mechanical Thread Cutters
Lubrication System	Semi-Automatic With Oil Reservoir	Semi-Automatic With Oil Reservoir
Motor	For sewing Head 1 H.P.	For sewing Head 1 H.P.
Available in	three phase	three phase

## 5. DRIVE MOTOR FOR SEWING HEAD

The sewing machine is driven by 1 H.P. (2850 RPM, 50 HZ, 3 Phase, KW 0.75). Check to see that the sewing machine rotates clockwise.

## 6. SPEED TIMING WITH CONVEYOR

The sewing machine speed must be timed with the conveyor speed. All units provided with a conveyor are properly timed at our factory before shipment.



**7. THREADING (FIG. NO. 1)**

The line drawing above (fig. No. 1) indicates threading procedure in dotted lines for the following:

- A. Needle Thread
- B. Looper Thread

Incorrect threading of machine will result in skip stitching, threading breakage and lack of uniformity in the sewing performance.

**7-1. THREAD TENSION**

The thread tension must be adjusted in each individual case according to sewing fabric thickness, sewing thread, stitch length etc.

## 8. LUBRICATION :

### 8.1 LUBRICANT

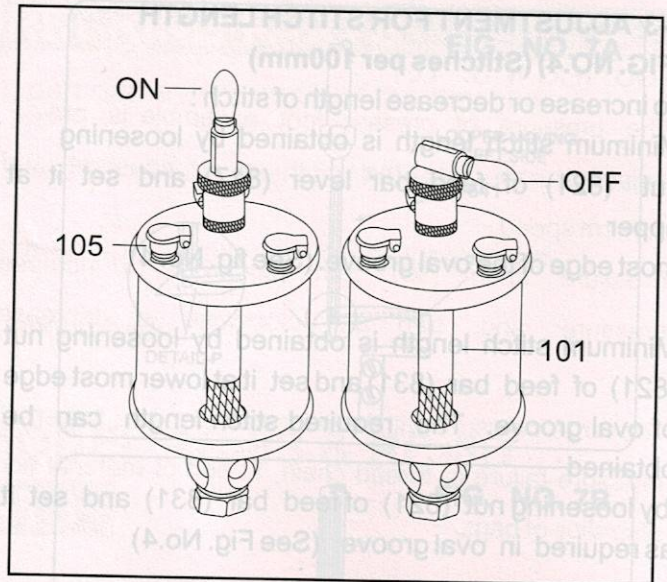
We recommend oil no. 20w-40 ro 40 (Motor Oil)

### 8.2 OIL RESERVOIR (Fig. No. 2)

Fill oil in the oil reservoir (101) by opening oil cap (105)

### 8.3 OIL LEVEL (Fig. No. 2)

Fill oil and maintain oil level between maximum and minimum live at all times. (See Fig. No. 2)



## 9. ADJUSTING INSTRUCTION

The Adjusting Instruction portion of this Manual explains in detail how to set each of the component related to forming the stitch. Diagram are used to illustrate the adjustments using reference letters to point out specific item discussed.

### 9.1 NEEDLE INSTALLATION (Fig. No. 3)

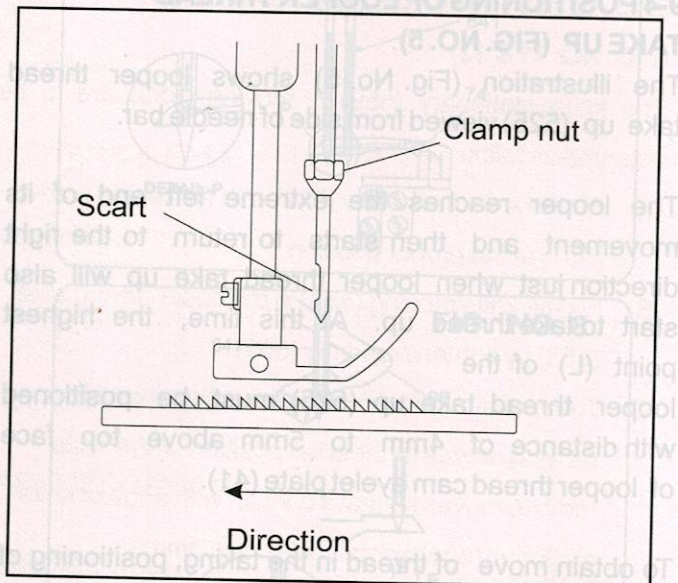
Turn pulley until needle bar reaches its highest position. Shaved part of needle should face rear side in feeding direction of material as shown in. (See Fig. 3)

For Model RC-8D set two needles in needle holder to correspond with needle hole of needle plate in correct position.

### 9-2. NEEDLE RECOMMENDATION

For REVO Model RC-8S & RC-8D

Size: DRx2-26 (ORGAN)



### 9-3 ADJUSTMENT FOR STITCH LENGTH

#### (FIG. NO.4) (Stitches per 100mm)

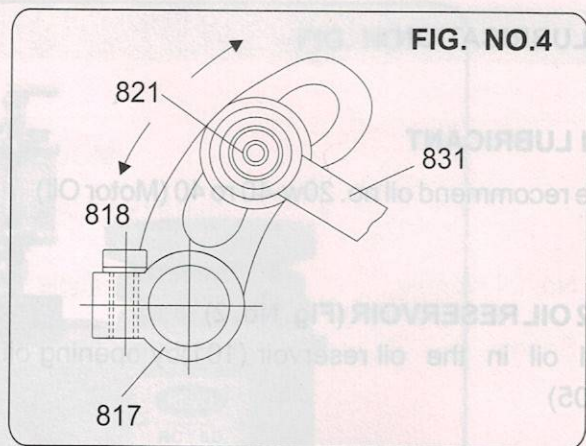
To increase or decrease length of stitch :

Minimum stitch length is obtained by loosening nut (821) of feed bar lever (817) and set it at upper

most edge of the oval groove. (See fig. No.4)

Minimum stitch length is obtained by loosening nut (821) of feed bar (831) and set it at lower most edge of oval groove. The required stitch length can be obtained

by loosening nut (821) of feed bar (831) and set it as required in oval groove. (See Fig. No.4)



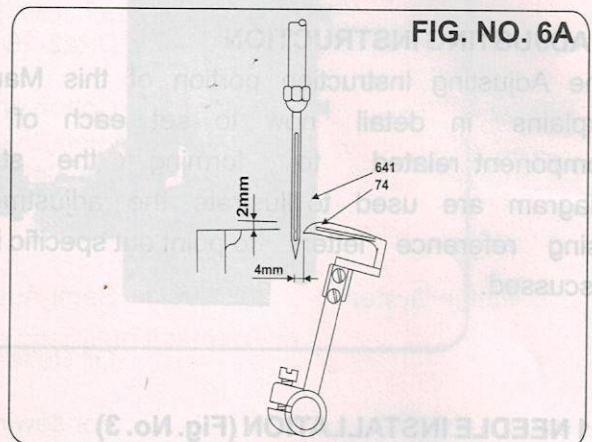
### 9-4 POSITIONING OF LOOPER THREAD

#### TAKE UP (FIG. NO. 5)

The illustration (Fig. No. 5) shows looper thread take up (525) viewed from side of needle bar.

The looper reaches the extreme left end of its movement and then starts to return to the right direction just when looper thread take up will also start to take thread up. At this time, the highest point (L) of the looper thread take up (525) must be positioned with distance of 4mm to 5mm above top face of looper thread cam eyelet plate (41).

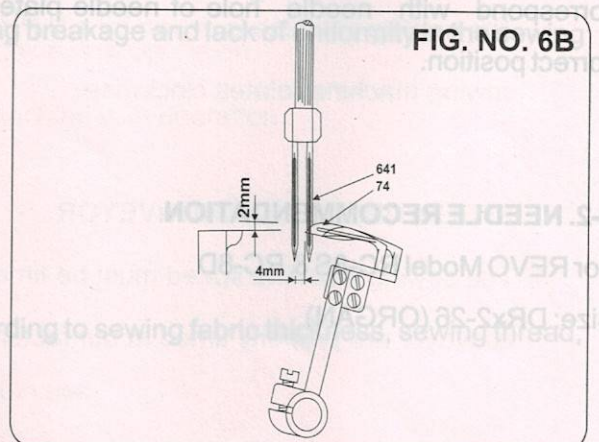
To obtain move of thread in the taking, positioning of take up (525) must be made earlier than the timing mentioned above. While adjusting, take extra care to ensure that the take up does not move in right or left direction. (See Fig. No. 5)



### 9-5. ADJUSTMENT OF LOOPER

#### (FIG. NO. 6A 7 6B)

When the looper reaches extreme end of its movement of the right, when needles are at their lowest position & looper is at extreme right of the movement distance of looper point from centre of needle shall be 4mm & this adjustment is made is by loosening screw (72).

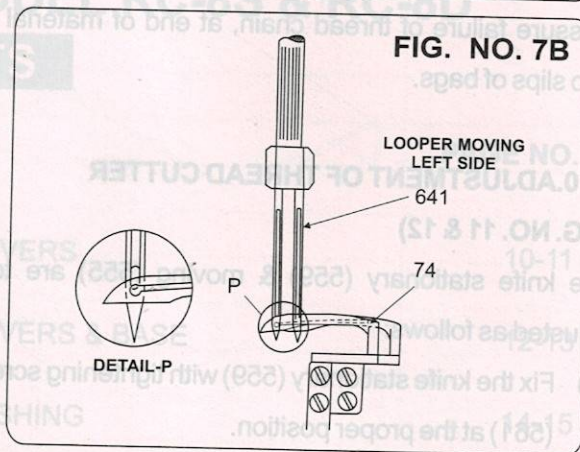
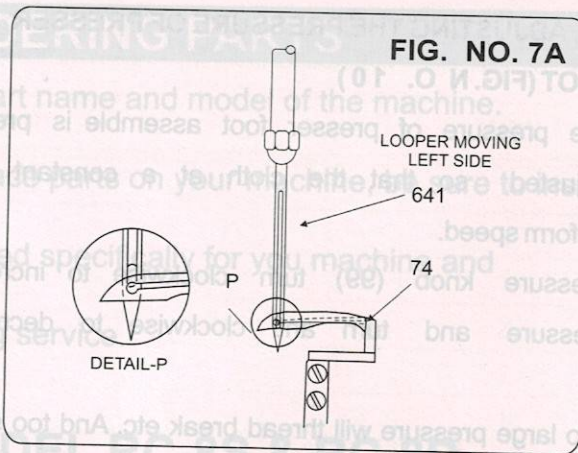




**9-6. TIMING OF NEEDLE WITH LOOPER MOVING RIGHT/LEFT (FIG. NO. 6A, 6B, 7A & 7B)**

On its both ways to right and left position of holes of looper must coincide with the holes of needle.

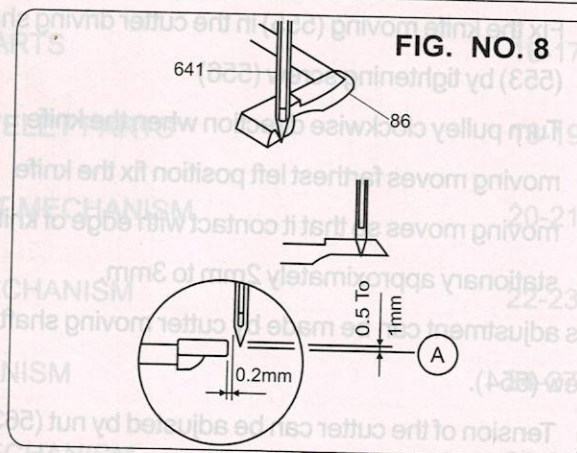
To obtain above position, height screw of needle bar shall be adjusted by loosening screw of needle bar connecting bracket (612).



**6-7. ADJUSTMENT BETWEEN NEEDLE AND NEEDLE SUPPORT (FIG. NO. 8)**

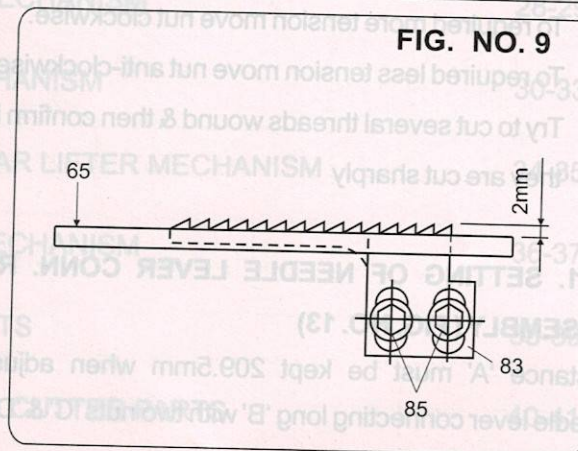
Install the needle support (86) so that the point 'A' may come to the position of about 0.5mm to 1mm upward, the clearance between the needle and the needle support should be 0.2mm but ensure that the needle support will not touch the needle.

This needle support must be fixed on feed dog holder. If the needle guard is not adjusted properly, it can cause either breakage of needle or skipping of stitches.



**9-8. ADJUSTMENT OF HEIGHT OF FEED DOG (FIG. NO. 9)**

Top faces of feed dog (83) and needle plate (65) must be parallel when the feed dog (83) reaches its highest position. At this stage the levelling top face the feed dog (83) must be 2mm upper than needle plate (65). Height of the feed dog must be adjusted by screw (85).



## 9-9. ADJUSTING THE PRESSURE OF PRESSER FOOT (FIG. NO. 10)

The pressure of presser foot assemble is pre-Adjusted so that the cloth at a constant and uniform speed.

Pressure knob (99) turn clockwise to increase pressure and turn anti clockwise to decrease it.

Too large pressure will thread break etc. And too small pressure failure of thread chain, at end of material and also slips of bags.

## 9-10. ADJUSTMENT OF THREAD CUTTER (FIG. NO. 11 & 12)

The knife stationary (559) & moving (555) are to be adjusted as follows:

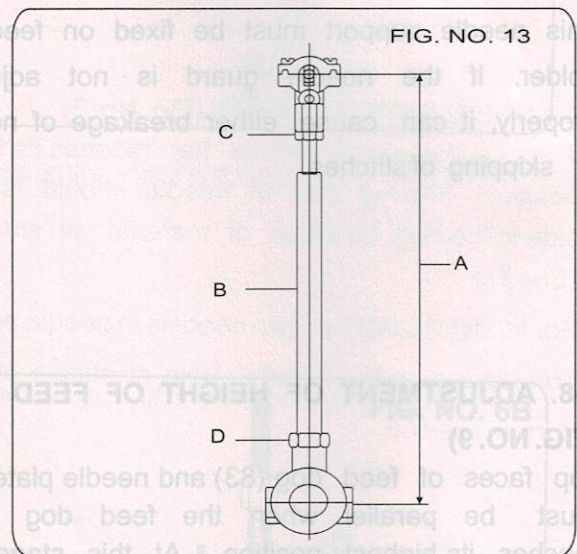
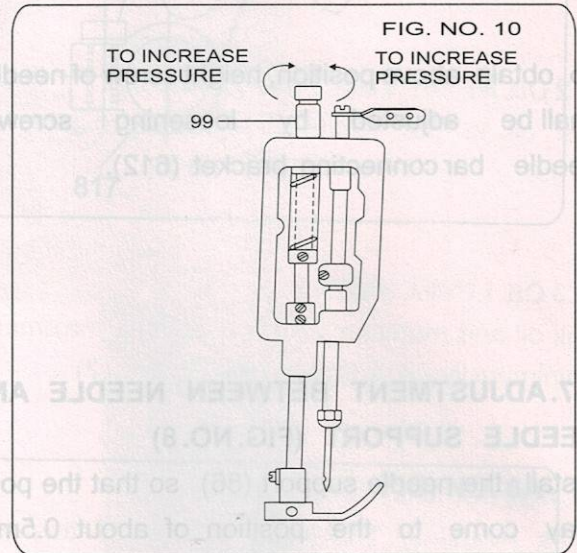
- (A) Fix the knife stationary (559) with tightening screw (561) at the proper position.
- (B) Fix the knife moving (555) in the cutter driving shaft (553) by tightening screw (556)
- (C) Turn pulley clockwise direction when the knife moving moves farthest left position fix the knife moving moves so that it contact with edge of knife stationary approximately 2mm to 3mm.

This adjustment can be made by cutter moving shaft with screw (554).

- (D) Tension of the cutter can be adjusted by nut (563)  
To required more tension move nut clockwise.  
To required less tension move nut anti-clockwise.
- (E) Try to cut several threads wound & then confirm if they are cut sharply

## 9-11. SETTING OF NEEDLE LEVER CONN. ROD. ASSEMBLY (FIG. NO. 13)

Distance 'A' must be kept 209.5mm when adjusting needle lever connecting long 'B' with two nuts 'C' & 'D'.



# IDENTIFICATION & ORDERING PARTS

While placing the orders, please mention part number, part name and model of the machine.

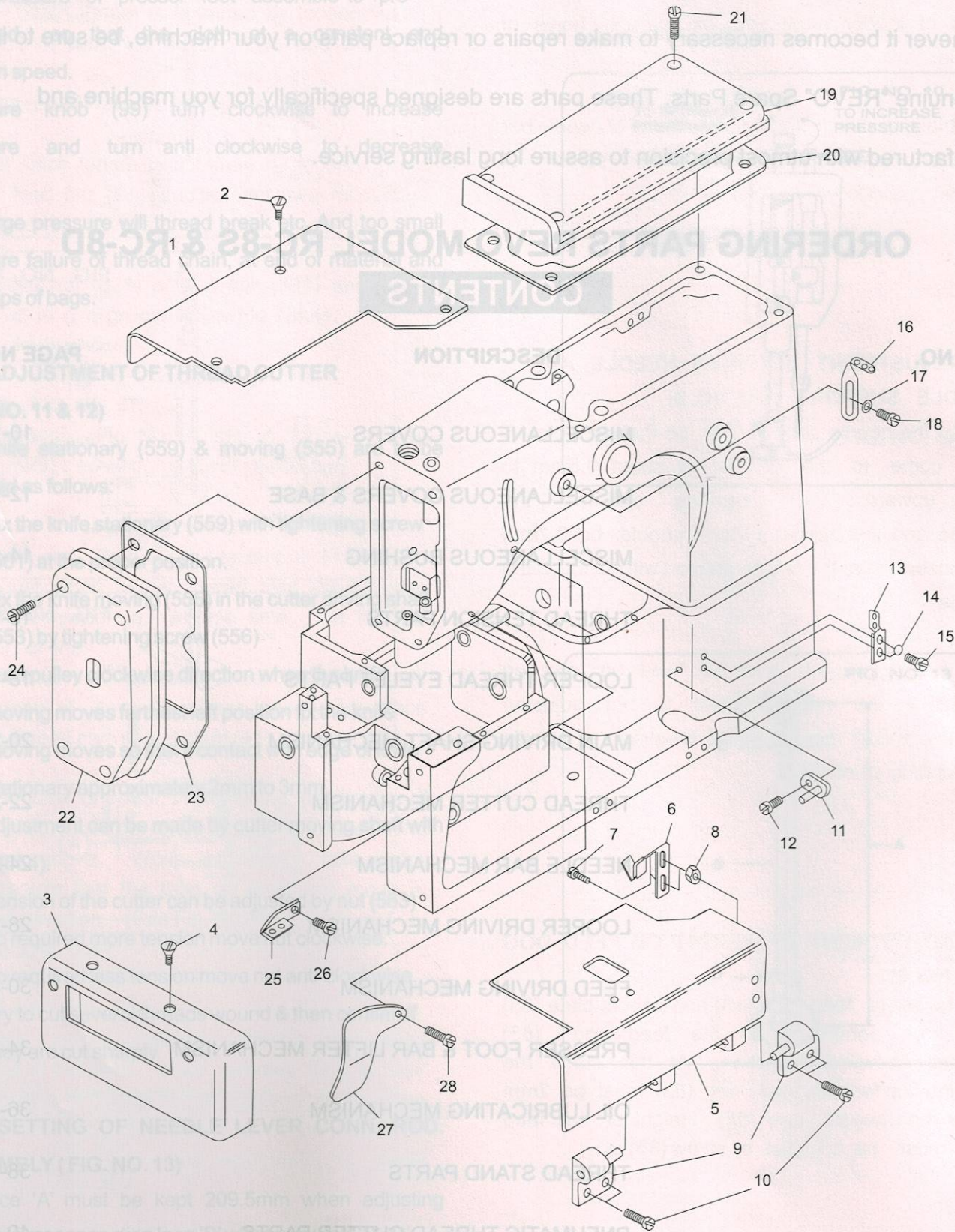
Whenever it becomes necessary to make repairs or replace parts on your machine, be sure to insist on genuine "REVO" Spare Parts. These parts are designed specifically for you machine and manufactured with utmost precision to assure long lasting service.

## ORDERING PARTS REVO MODEL RC-8S & RC-8D

### CONTENTS

SR. NO.	DESCRIPTION	PAGE NO.
1	MISCELLANEOUS COVERS	10-11
2	MISCELLANEOUS COVERS & BASE	12-13
2A	MISCELLANEOUS BUSHING	14-15
3	THREAD TENSION PARTS	16-17
4	LOOPER THREAD EYELET PARTS	18-19
5	MAIN DRIVING SHAFT MECHANISM	20-21
5	THREAD CUTTER MECHANISM	22-23
6	NEEDLE BAR MECHANISM	24-27
7	LOOPER DRIVING MECHANISM	28-29
8	FEED DRIVING MECHANISM	30-33
9	PRESSER FOOT & BAR LIFTER MECHANISM	34-35
10	OIL LUBRICATING MECHANISM	36-37
11	THREAD STAND PARTS	38-39
12	PNEUMATIC THREAD CUTTER PARTS	40-41

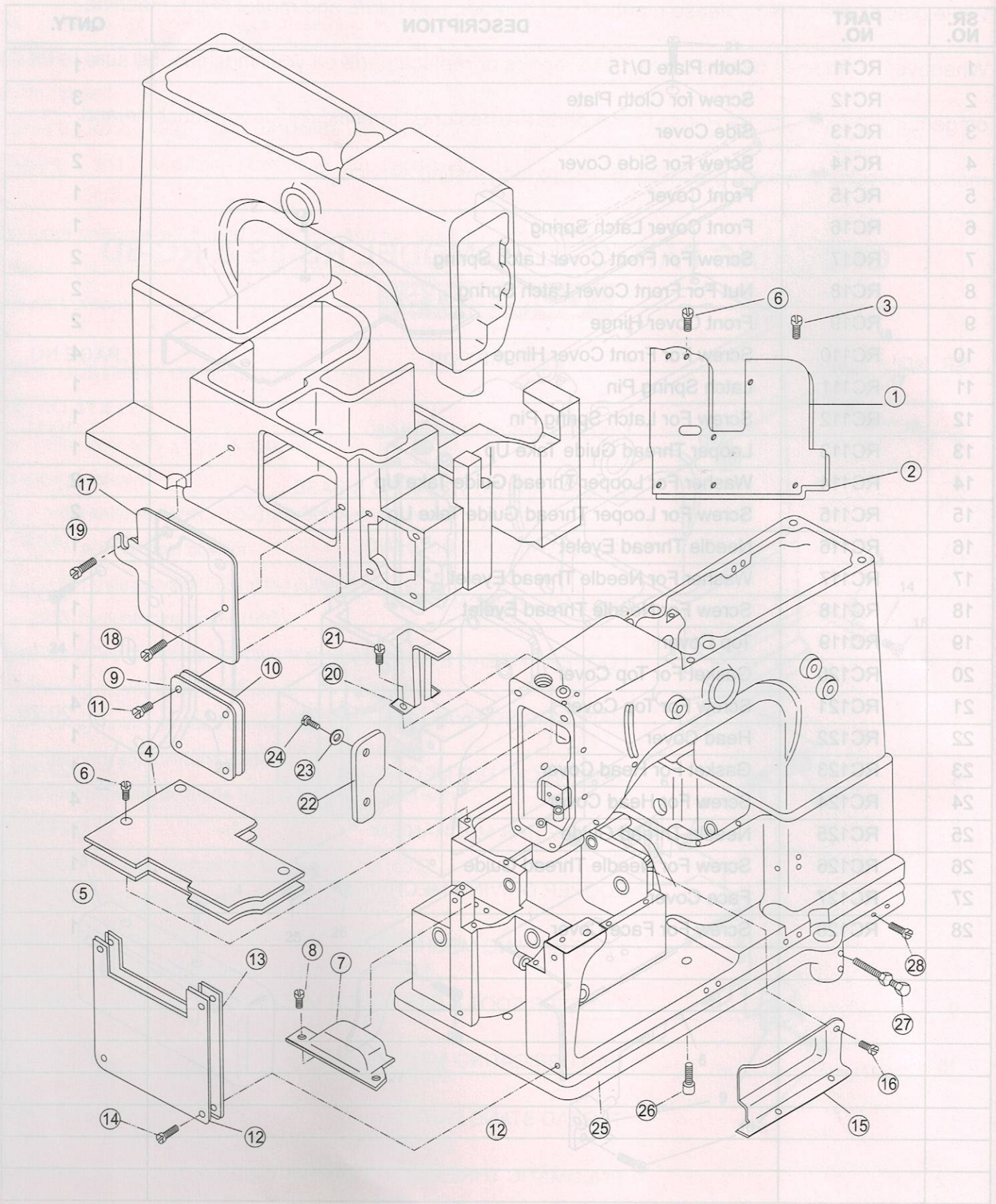
# (1) MISCELLANEOUS COVER



# (1) MISCELLANEOUS COVER

SR. NO.	PART NO.	DESCRIPTION	QNTY.
1	RC11	Cloth Plate D/15	1
2	RC12	Screw for Cloth Plate	3
3	RC13	Side Cover	1
4	RC14	Screw For Side Cover	2
5	RC15	Front Cover	1
6	RC16	Front Cover Latch Spring	1
7	RC17	Screw For Front Cover Latch Spring	2
8	RC18	Nut For Front Cover Latch Spring	2
9	RC19	Front Cover Hinge	2
10	RC110	Screw For Front Cover Hinge	4
11	RC111	Latch Spring Pin	1
12	RC112	Screw For Latch Spring Pin	1
13	RC113	Looper Thread Guide Take Up	1
14	RC114	Washer For Looper Thread Guide Take Up	2
15	RC115	Screw For Looper Thread Guide Take Up	2
16	RC116	Needle Thread Eyelet	1
17	RC117	Washer For Needle Thread Eyelet	1
18	RC118	Screw For Needle Thread Eyelet	1
19	RC119	Top Cover	1
20	RC120	Gasket For Top Cover	1
21	RC121	Screw For Top Cover	4
22	RC122	Head Cover	1
23	RC123	Gasket For Head Cover	1
24	RC124	Screw For Head Cover	4
25	RC125	Needle Thread Guide	1
26	RC126	Screw For Needle Thread Guide	1
27	RC127	Face Cover	1
28	RC128	Screw For Face Cover	1

## (2) MISCELLANEOUS COVER & BASE PARTS

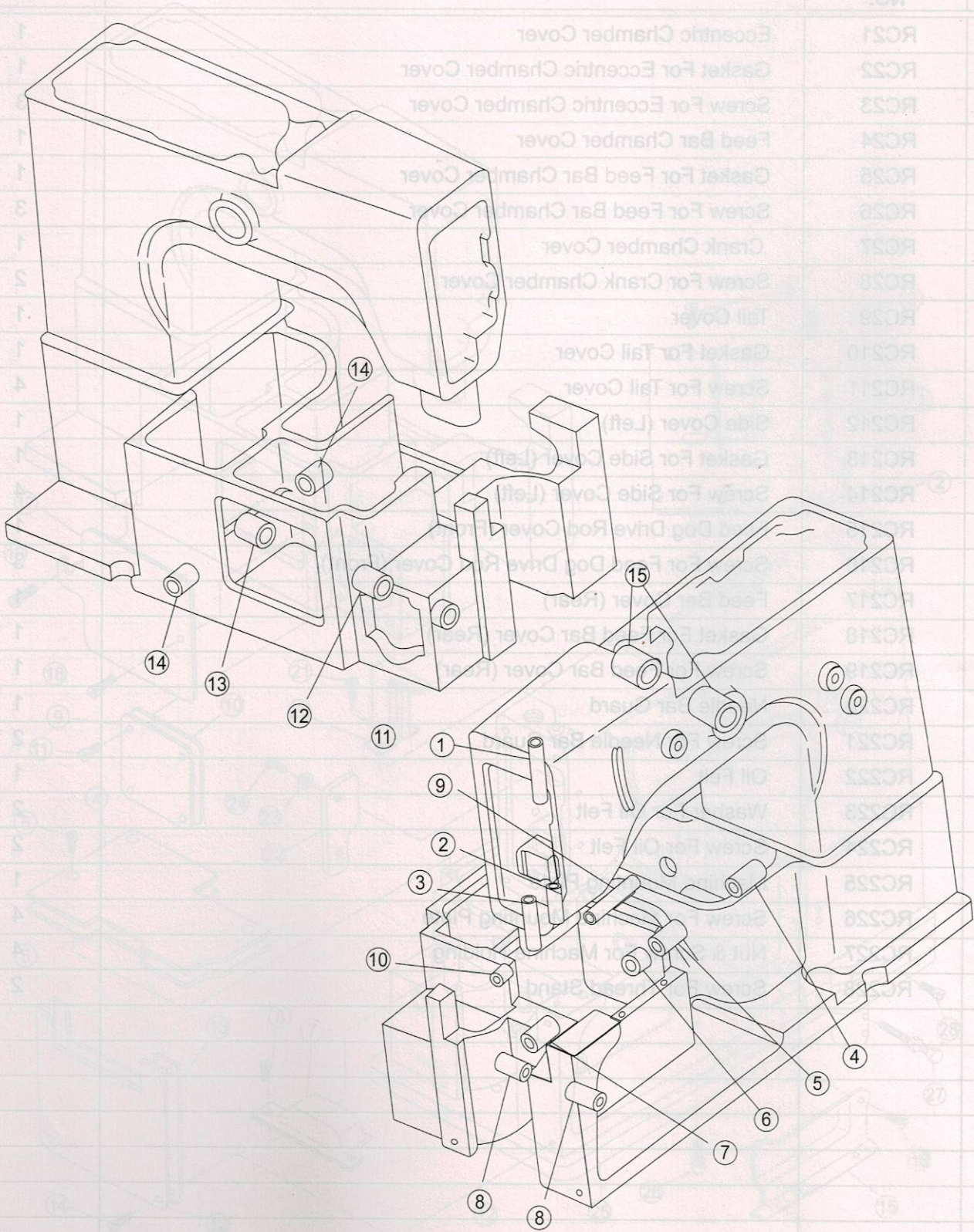


## (2) MISCELLANEOUS COVER & BASE PARTS

SR. NO.	PART NO.	DESCRIPTION	QNTY.
1	RC21	Eccentric Chamber Cover	1
2	RC22	Gasket For Eccentric Chamber Cover	1
3	RC23	Screw For Eccentric Chamber Cover	3
4	RC24	Feed Bar Chamber Cover	1
5	RC25	Gasket For Feed Bar Chamber Cover	1
6	RC26	Screw For Feed Bar Chamber Cover	3
7	RC27	Crank Chamber Cover	1
8	RC28	Screw For Crank Chamber Cover	2
9	RC29	Tail Cover	1
10	RC210	Gasket For Tail Cover	1
11	RC211	Screw For Tail Cover	4
12	RC212	Side Cover (Left)	1
13	RC213	Gasket For Side Cover (Left)	1
14	RC214	Screw For Side Cover (Left)	4
15	RC215	Feed Dog Drive Rod Cover (Front)	1
16	RC216	Screw For Feed Dog Drive Rod Cover (Front)	3
17	RC217	Feed Bar Cover (Rear)	1
18	RC218	Gasket For Feed Bar Cover (Rear)	1
19	RC219	Screw For Feed Bar Cover (Rear)	1
20	RC220	Needle Bar Guard	1
21	RC221	Screw For Needle Bar Guard	2
22	RC222	Oil Felt	1
23	RC223	Washer For Oil Felt	2
24	RC224	Screw For Oil Felt	2
25	RC225	Machine Mounting Plate	1
26	RC226	Screw For Machine Mounting Plate	4
27	RC227	Nut & Screw For Machine Holding	4
28	RC228	Screw For Thread Stand	2

# (2A) MISCELLANEOUS BUSHING

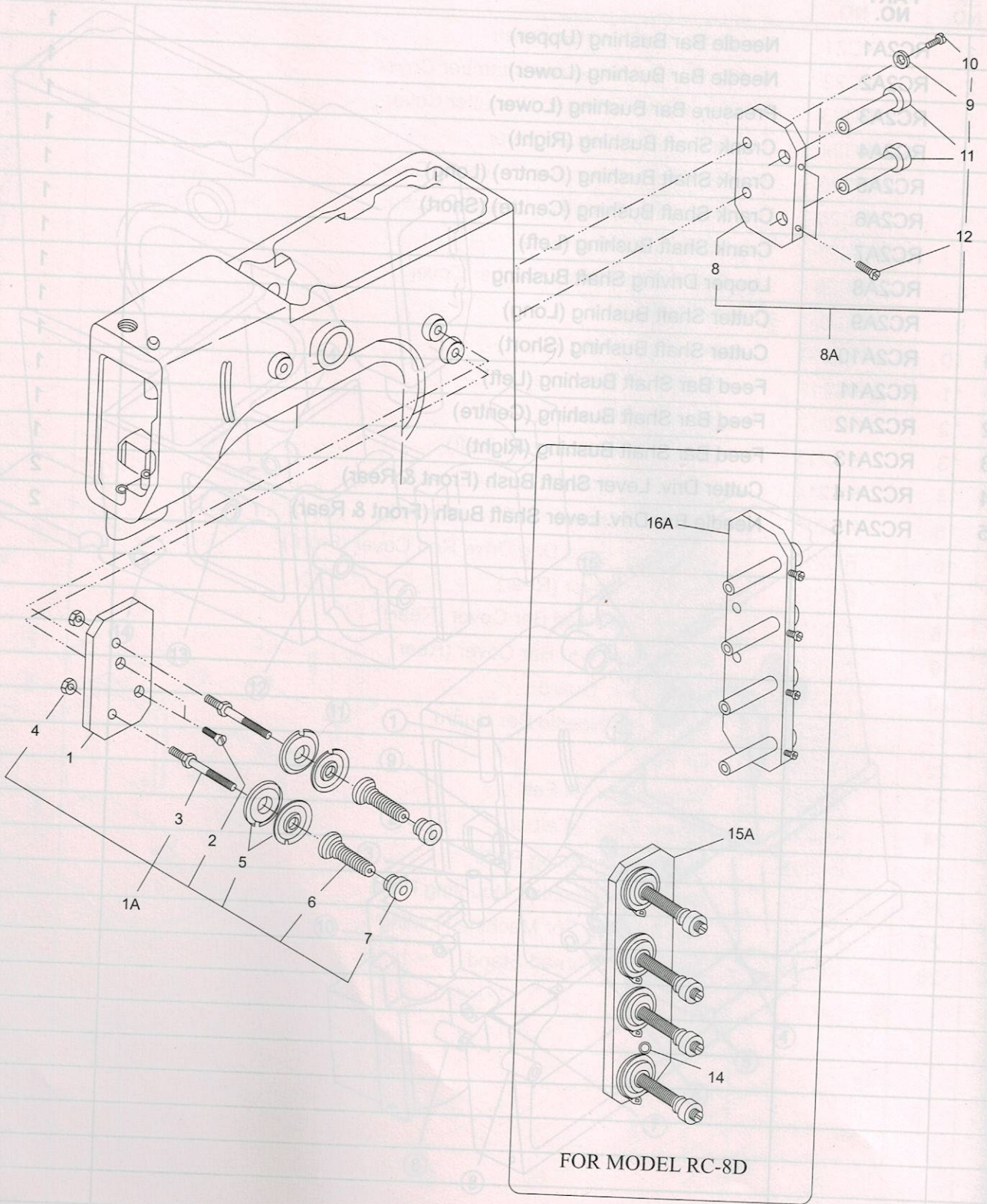
SR. NO.	PART NO.	DESCRIPTION	QNTY.
1	RC21	Eccentric Chamber Cover	1
2	RC22	Gasket For Eccentric Chamber Cover	1
3	RC23	Screw For Eccentric Chamber Cover	3
4	RC24	Feed Bar Chamber Cover	1
5	RC25	Gasket For Feed Bar Chamber Cover	1
6	RC26	Screw For Feed Bar Chamber Cover	3
7	RC27	Crank Chamber Cover	1
8	RC28	Screw For Crank Chamber Cover	2
9	RC29	Tail Cover	1
10	RC30	Gasket For Tail Cover	1
11	RC31	Screw For Tail Cover	4
12	RC32	Side Cover (Left)	1
13	RC33	Gasket For Side Cover (Left)	1
14	RC34	Screw For Side Cover (Left)	4
15	RC35	Dog Drive Rod Cover (Front)	1
16	RC36	Screw For Dog Drive Rod Cover (Front)	2
17	RC37	Feed Bar (Front)	1
18	RC38	Gasket For Feed Bar (Front)	1
19	RC39	Screw For Feed Bar (Front)	1
20	RC40	Wear For Feed Bar	1
21	RC41	Oil Feeder	1
22	RC42	Washer For Oil Feeder	1
23	RC43	Screw For Oil Feeder	2
24	RC44	Washer For Oil Feeder	1
25	RC45	Screw For Oil Feeder	1
26	RC46	Screw For Oil Feeder	4
27	RC47	Nut For Oil Feeder	4
28	RC48	Screw For Oil Feeder	2







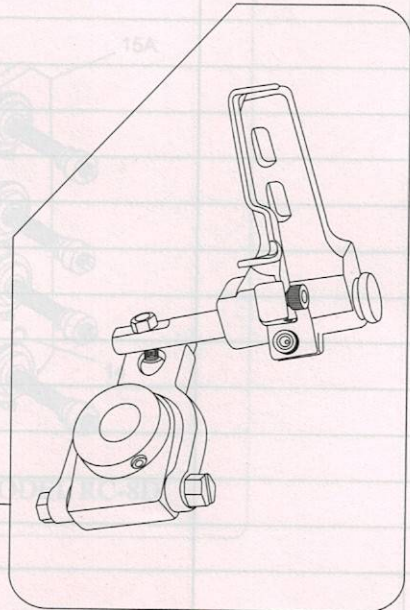
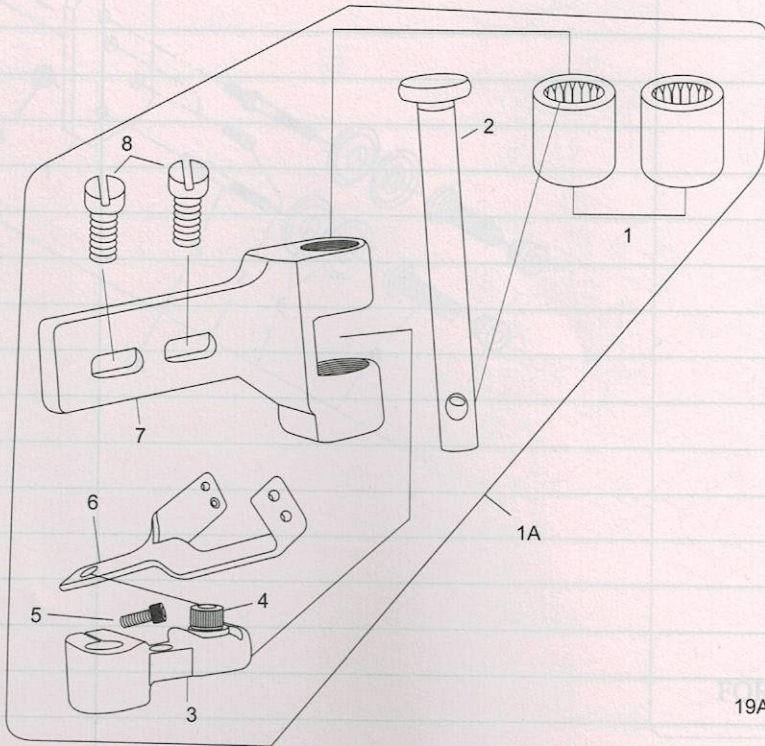
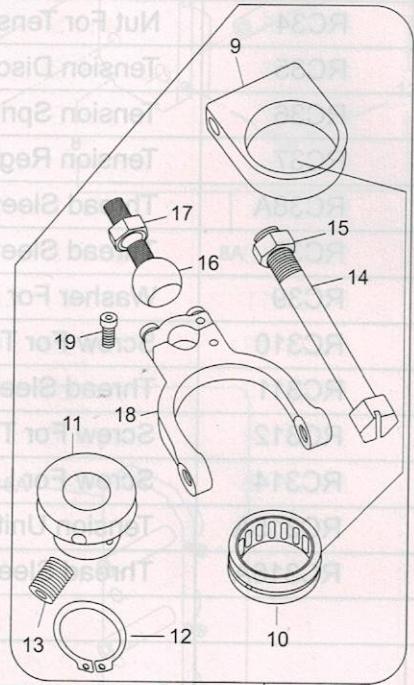
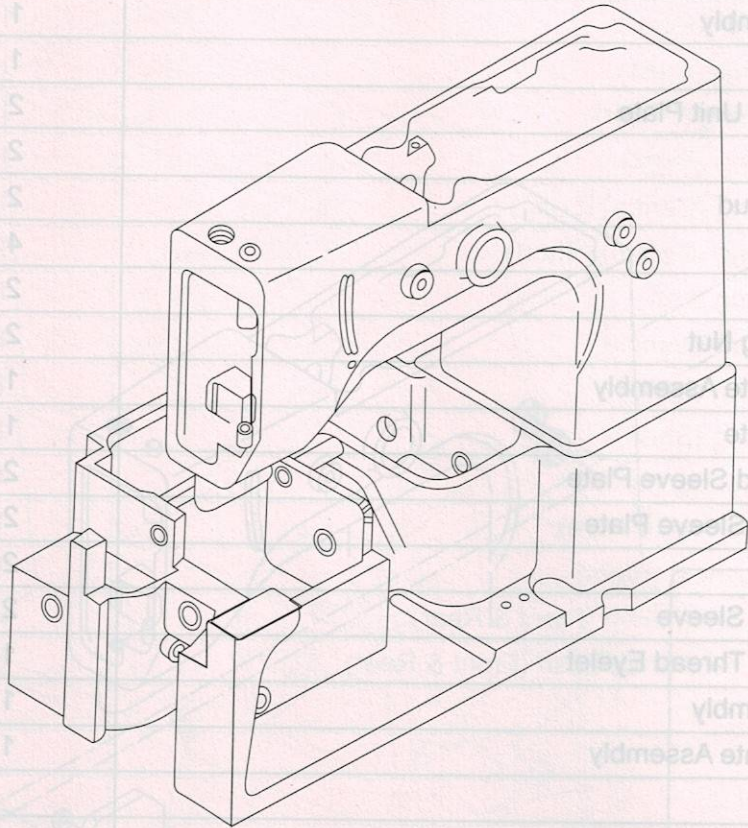
# (3) THREAD TENSION PARTS





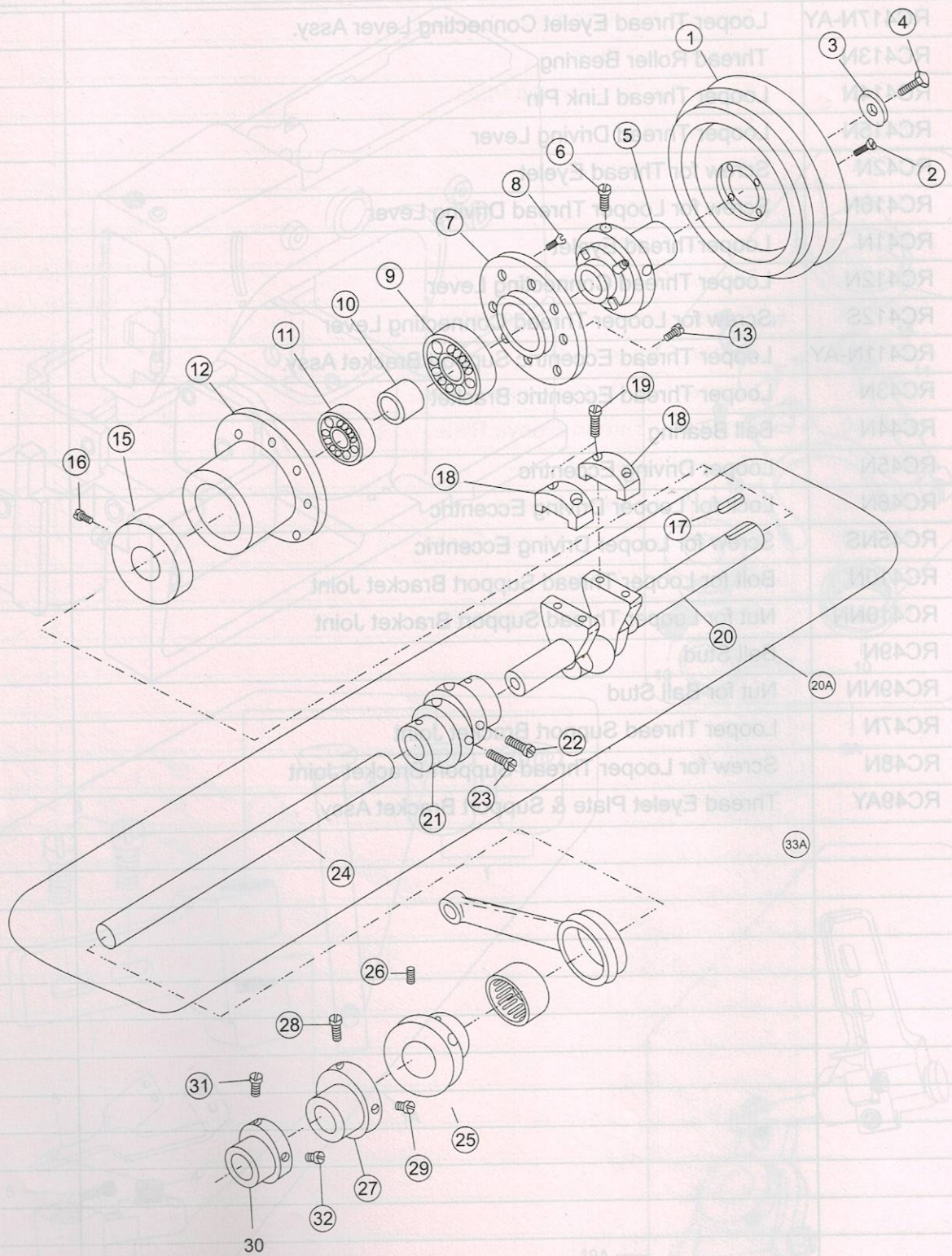
# (4) LOOPER THREAD EYELET PARTS

QNTY.	DESCRIPTION	PART NO.	SR. NO.
1	Tension Unit Assembly	RC31A	1A
1	Tension Unit Plate	RC31	1
2	Screw For Tension Unit Plate	RC32	2
2	Tension Stud	RC33	3
2	Nut For Tension Stud	RC34	4
4	Tension Disc	RC35	5
2	Tension Spring	RC36	6
2	Tension Regulating Nut	RC37	7
1	Tension Sleeve Plate	RC38	8
1	Thread Sleeve Plate	RC39	8A
2	Washer For Thread Sleeve Plate	RC40	9
2	Thread Sleeve	RC41	10
1	Thread Sleeve	RC42	11
2	Thread Sleeve	RC43	12
1	Screw For Thread Sleeve	RC44	13
1	Tension Unit Assembly	RC45	14
1	Tension Unit Assembly	RC46	15A
1	Tension Unit Assembly	RC47	16A





# (5) MAIN DRIVING SHAFT MECHANISM

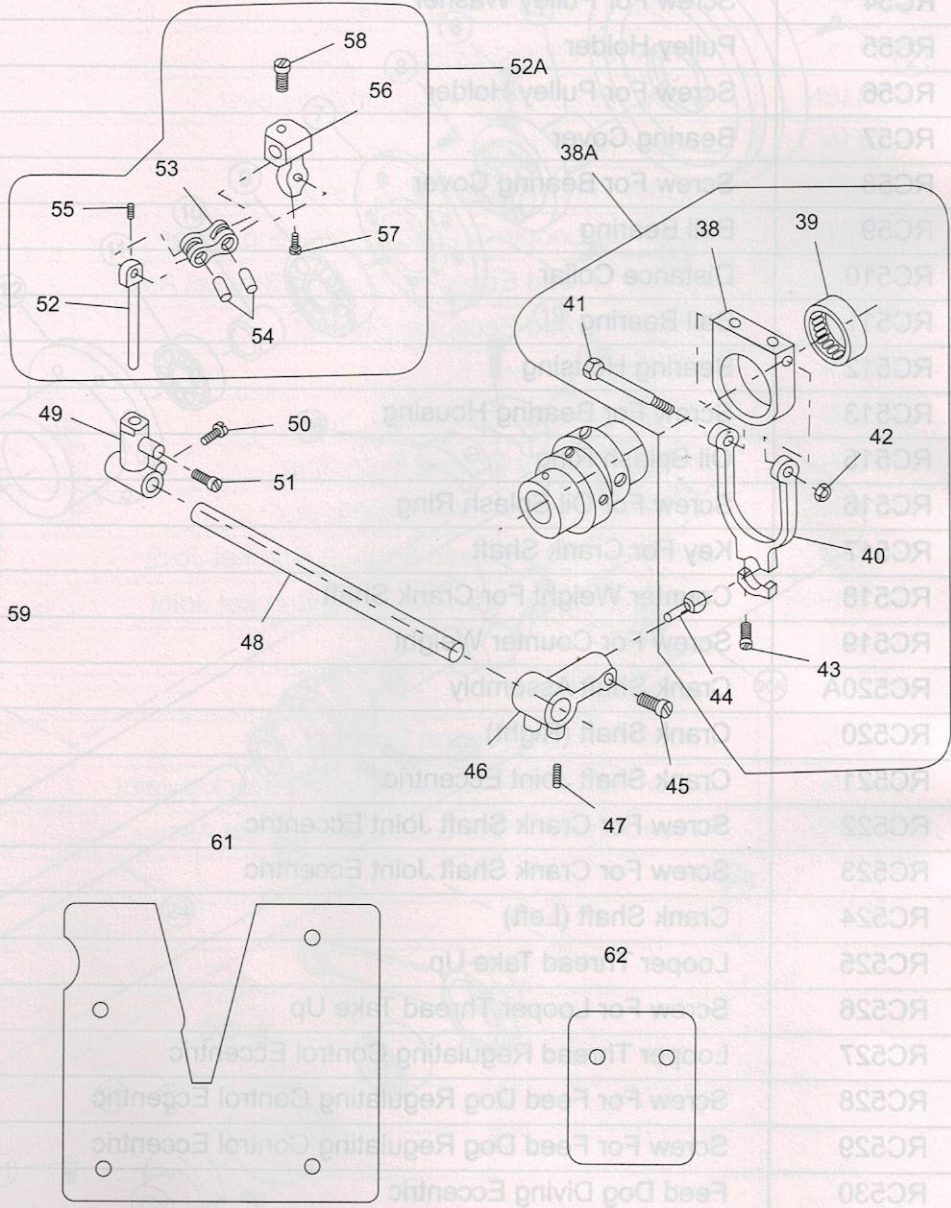


## (5) MAIN DRIVING SHAFT MECHANISM

SR. NO.	PART NO.	DESCRIPTION	QNTY.
1	RC51	Machine Pulley	1
2	RC52	Screw For Pulley	4
3	RC53	Pulley Washer	1
4	RC54	Screw For Pulley Washer	1
5	RC55	Pulley Holder	1
6	RC56	Screw For Pulley Holder	2
7	RC57	Bearing Cover	1
8	RC58	Screw For Bearing Cover	4
9	RC59	Ball Bearing	1
10	RC510	Distance Collar	1
11	RC511	Ball Bearing	1
12	RC512	Bearing Housing	1
13	RC513	Screw For Bearing Housing	4
15	RC515	Oil Splash Ring	1
16	RC516	Screw For Oil Splash Ring	2
17	RC517	Key For Crank Shaft	1
18	RC518	Counter Weight For Crank Shaft	2
19	RC519	Screw For Counter Weight	4
20A	RC520A	Crank Shaft Assembly	1
20	RC520	Crank Shaft (Right)	1
21	RC521	Crank Shaft Joint Eccentric	1
22	RC522	Screw For Crank Shaft Joint Eccentric	2
23	RC523	Screw For Crank Shaft Joint Eccentric	2
24	RC524	Crank Shaft (Left)	1
25	RC525	Looper Thread Take Up	1
26	RC526	Screw For Looper Thread Take Up	3
27	RC527	Looper Thread Regulating Control Eccentric	1
28	RC528	Screw For Feed Dog Regulating Control Eccentric	1
29	RC529	Screw For Feed Dog Regulating Control Eccentric	1
30	RC530	Feed Dog Diving Eccentric	1
31	RC531	Screw For Feed Dog Diving Eccentric	1
32	RC532	Screw For Feed Dog Diving Eccentric	1

# (5) THREAD CUTTER MECHANISM

QTY	DESCRIPTION	PART NO.	SER. NO.
1	Machine Pulley	RC51	1
4	Screw For Pulley	RC52	2
1	Pulley Washer	RC53	3
1	Screw For Pulley Washer	RC54	4
1	Pulley Holder	RC55	5
3	Screw For Pulley Holder	RC56	6
1	Bearing Cap	RC57	7
4	Screw For Bearing Cap	RC58	8
1	Bearing	RC59	9
1	Balance Cap	RC510	10
1	Bearing	RC511	11
1	Bearing	RC512	12
4	Bearing Housing	RC513	13
1	Key For Crank Shaft	RC514	14
1	Key For Crank Shaft	RC515	15
2	Screw For Crank Shaft	RC516	16
1	Weight For Crank Shaft	RC517	17
1	Weight For Crank Shaft	RC518	18
4	Counter Nut	RC519	19
1	Crank Shaft	RC520	20
1	Crank Shaft End	RC521	21
2	Screw For Crank Shaft Joint Eccentric	RC522	22
2	Screw For Crank Shaft Joint Eccentric	RC523	23
1	Crank Shaft (Left)	RC524	24
1	Looper Thread Take Up	RC525	25
3	Screw For Looper Thread Take Up	RC526	26
1	Looper Thread Regulating Control Eccentric	RC527	27
1	Screw For Feed Dog Regulating Control Eccentric	RC528	28
1	Screw For Feed Dog Regulating Control Eccentric	RC529	29
1	Feed Dog Diving Eccentric	RC530	30
1	Screw For Feed Dog Diving Eccentric	RC531	31
1	Screw For Feed Dog Diving Eccentric	RC532	32

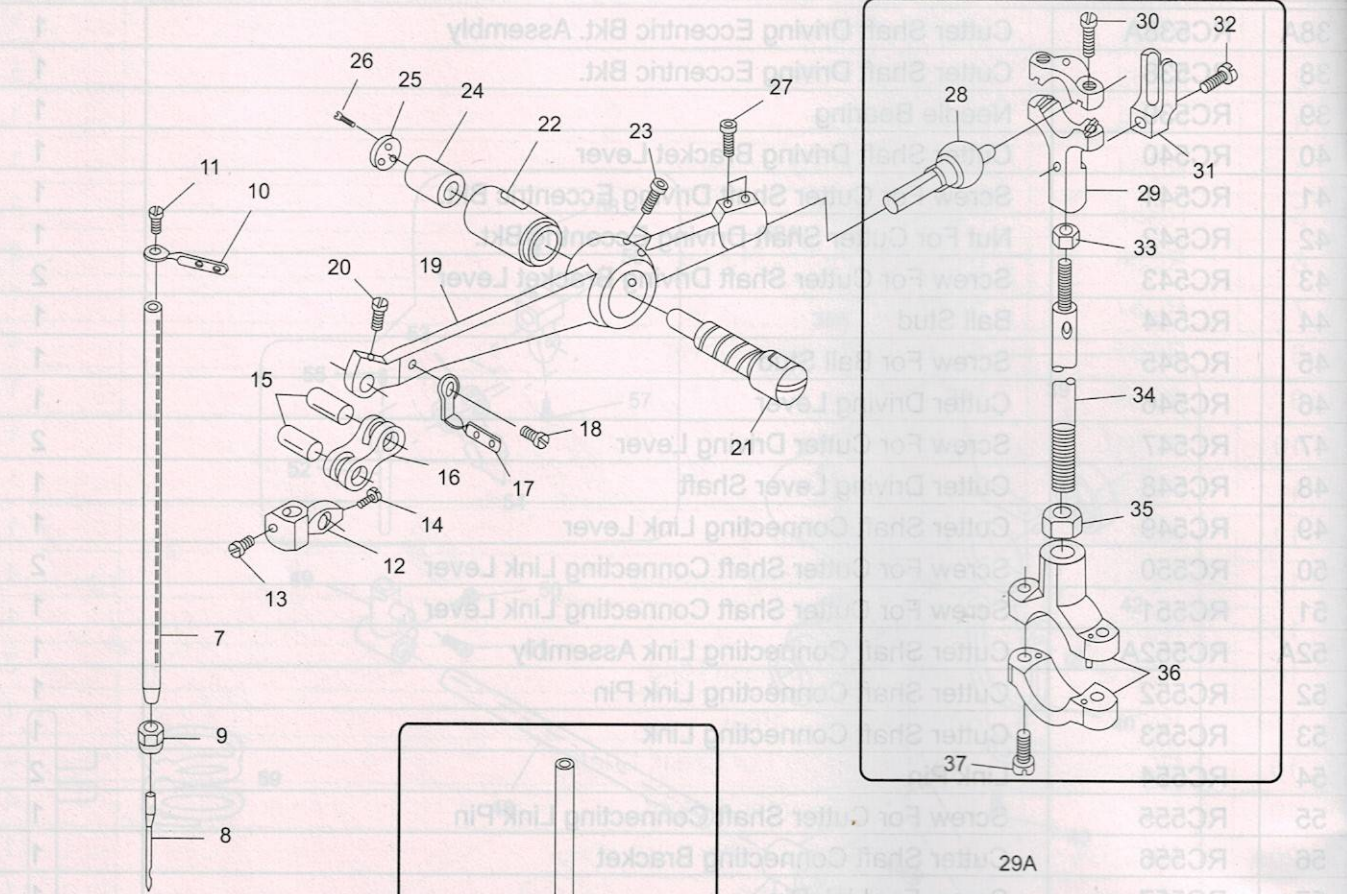




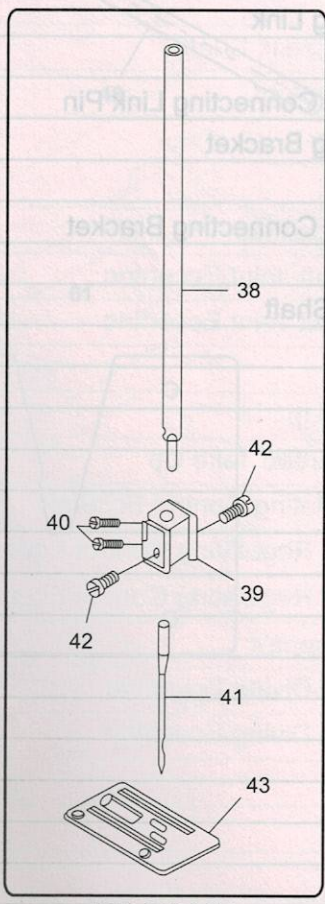


# (6) NEEDLE BAR MECHANISM

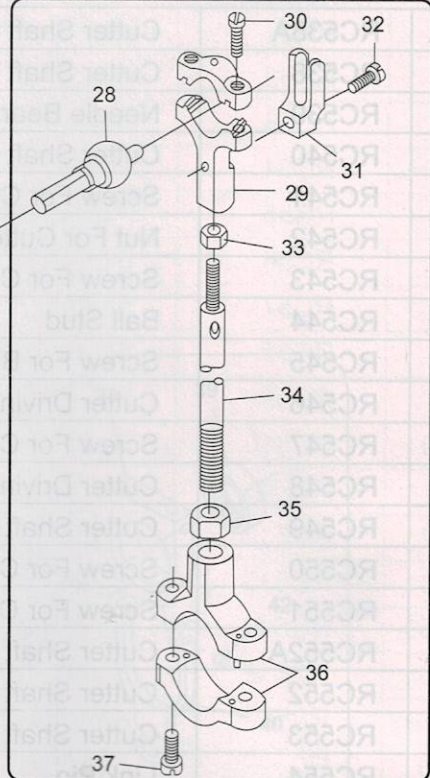
QTY	DESCRIPTION	PART NO.	SR. NO.
-----	-------------	----------	---------



1  
PARTS RC-8S

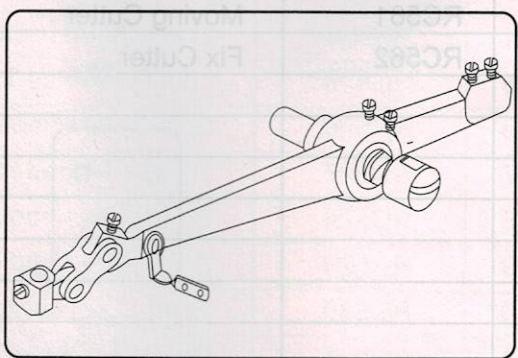


PARTS RC-8D



29A

19A

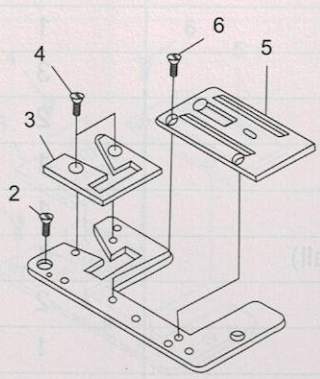
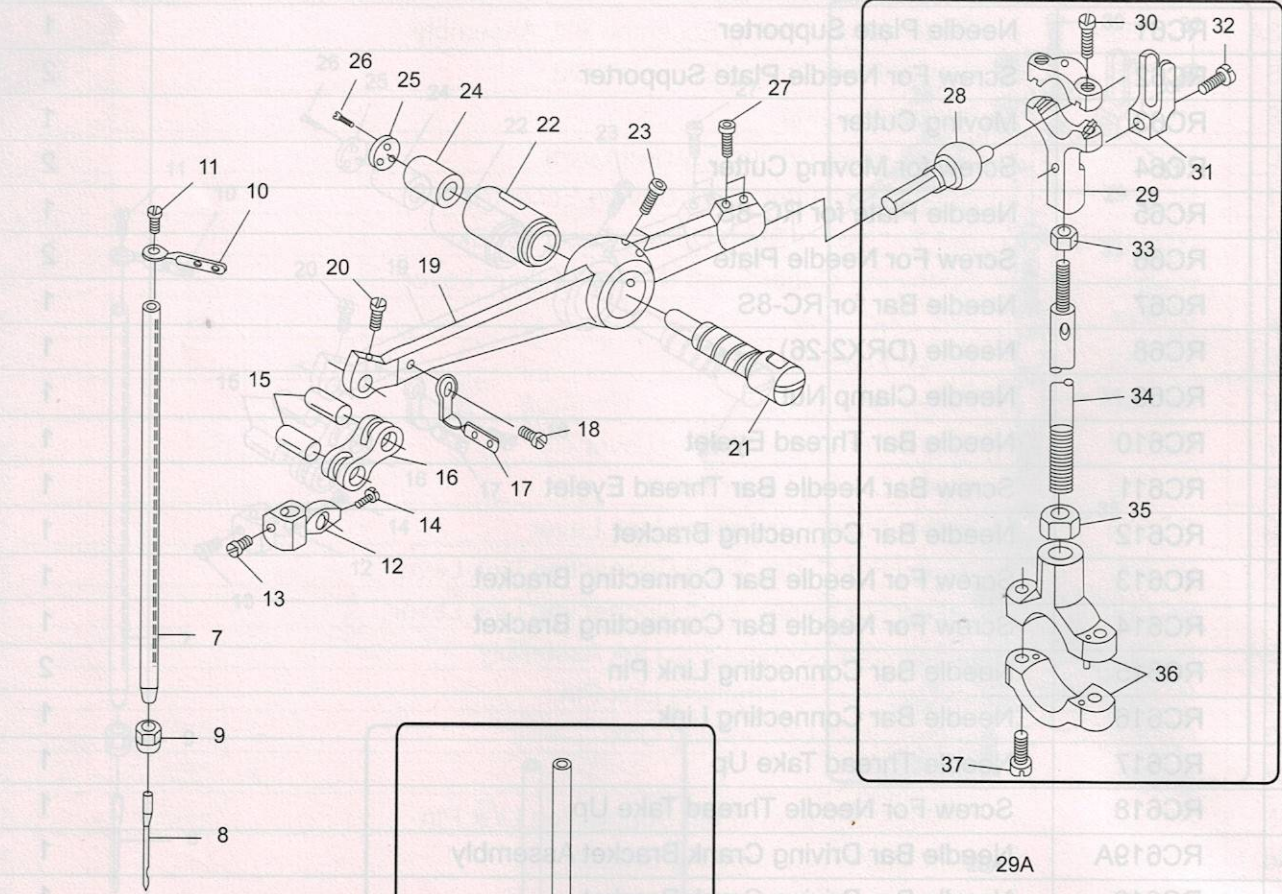


## (6) NEEDLE BAR MECHANISM

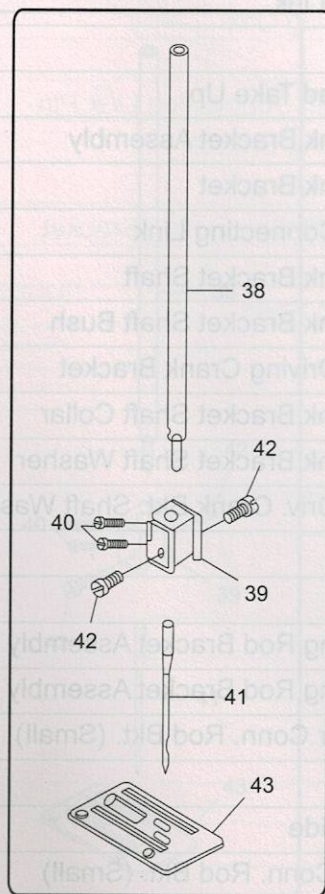
SR. NO.	PART NO.	DESCRIPTION	QNTY.
1	RC61	Needle Plate Supporter	1
2	RC62	Screw For Needle Plate Supporter	2
3	RC63	Moving Cutter	1
4	RC64	Screw for Moving Cutter	2
5	RC65	Needle Plate for RC-8S	1
6	RC66	Screw For Needle Plate	2
7	RC67	Needle Bar for RC-8S	1
8	RC68	Needle (DRX2-26)	1
9	RC69	Needle Clamp Nut	1
10	RC610	Needle Bar Thread Eyelet	1
11	RC611	Screw Bar Needle Bar Thread Eyelet	1
12	RC612	Needle Bar Connecting Bracket	1
13	RC613	Screw For Needle Bar Connecting Bracket	1
14	RC614	Screw For Needle Bar Connecting Bracket	1
15	RC615	Needle Bar Connecting Link Pin	2
16	RC616	Needle Bar Connecting Link	1
17	RC617	Needle Thread Take Up	1
18	RC618	Screw For Needle Thread Take Up	1
19A	RC619A	Needle Bar Driving Crank Bracket Assembly	1
19	RC619	Needle Bar Driving Crank Bracket	1
20	RC620	Screw For Needle Bar Connecting Link	1
21	RC621	Needle Bar Driving Crank Bracket Shaft	1
22	RC622	Needle Bar Driving Crank Bracket Shaft Bush	1
23	RC623	Screw For Needle Bar Driving Crank Bracket	2
24	RC624	Needle Bar Driving Crank Bracket Shaft Collar	1
25	RC625	Needle Bar Driving Crank Bracket Shaft Washer	1
26	RC626	Screw For Needle Bar Driv. Crank Bkt. Shaft Washer	3
27	RC627	Screw For Ball Stud	2
28	RC628	Ball Stud	1
29A	RC629A	Needle Lever Connecting Rod Bracket Assembly	1
29	RC629	Needle Lever Connecting Rod Bracket Assembly (Small)	1
30	RC630	Screw For Needle Lever Conn. Rod Bkt. (Small)	2
31	RC631	Ball Stud Guide	1
32	RC632	Screw For Ball Stud Guide	1
33	RC633	Nut For Needle Lever Conn. Rod Bkt. (Small)	1
34	RC634	Needle Lever Connecting Rod (Long)	1

# (6) NEEDLE BAR MECHANISM

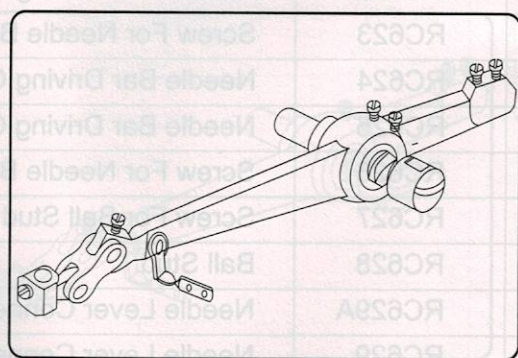
QTY	DESCRIPTION	PART NO	SERIAL NO
-----	-------------	---------	-----------



1  
PARTS RC-8S



PARTS RC-8D



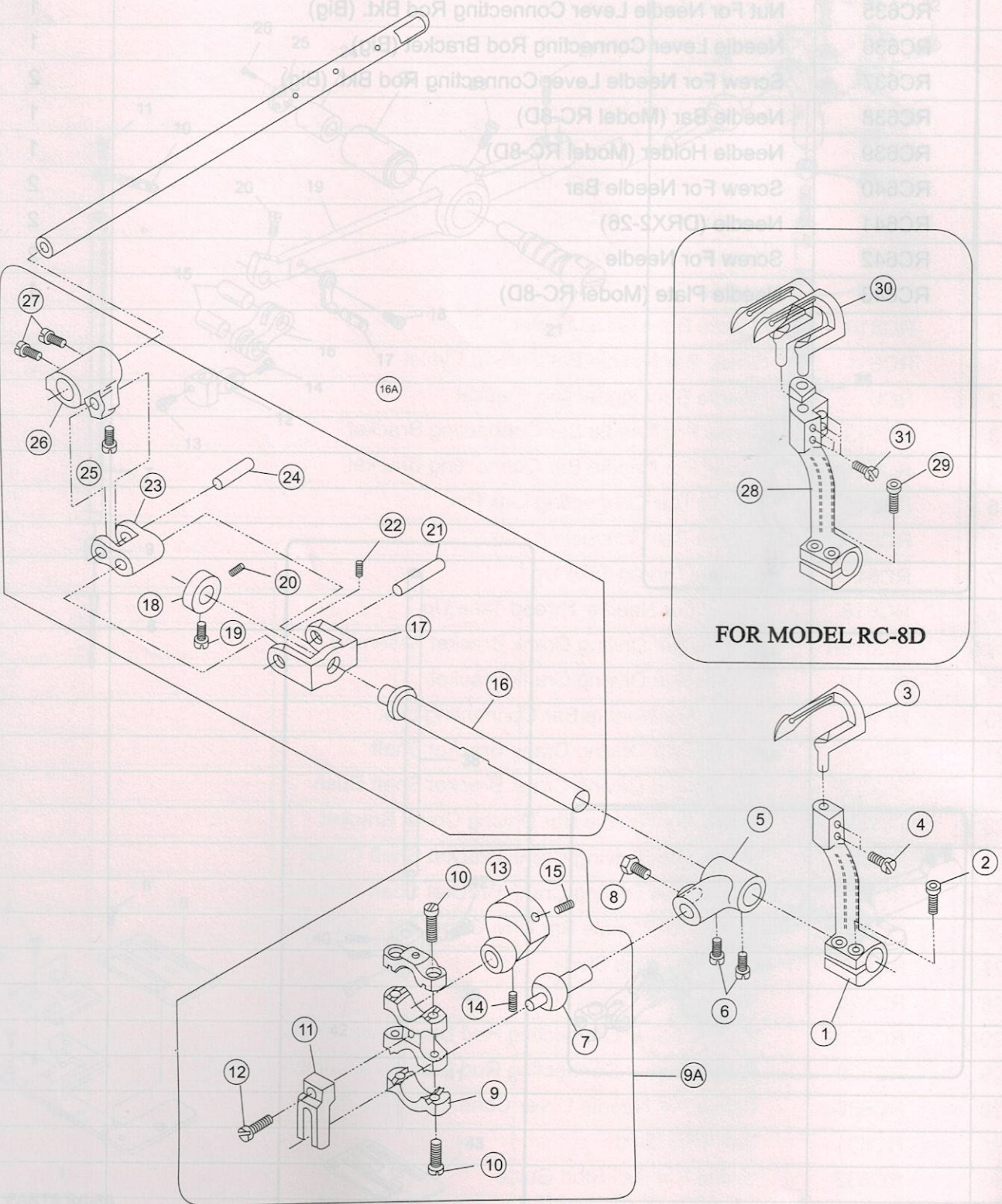
29A

19A

## (6) NEEDLE BAR MECHANISM

SR. NO.	PART NO.	DESCRIPTION	QNTY.
35	RC635	Nut For Needle Lever Connecting Rod Bkt. (Big)	1
36	RC636	Needle Lever Connecting Rod Bracket (Big)	1
37	RC637	Screw For Needle Lever Connecting Rod Bkt. (Big)	2
38	RC638	Needle Bar (Model RC-8D)	1
39	RC639	Needle Holder (Model RC-8D)	1
40	RC640	Screw For Needle Bar	2
41	RC641	Needle (DRX2-26)	2
42	RC642	Screw For Needle	2
43	RC643	Needle Plate (Model RC-8D)	1
9	RC79	Looper Connecting Rod Complete	1
10	RC710	Screw For Looper Connecting Rod Complete	1
11	RC711	Ball Stud Guide	1
12	RC712	Screw For Ball Stud Guide	1
13	RC713	Looper Driving Eccentric Crank	1
14	RC714	Screw For Looper Driving Eccentric Crank	1
15	RC715	Screw For Looper Driving Eccentric Crank	1
16A	RC716A	Looper Driving Shaft Assembly	1
16	RC716	Looper Driving Shaft	1
17	RC717	Looper Link Holder	1
18	RC718	Looper Driving Shaft Collar	1
19	RC719	Screw For Looper Driving Shaft Collar	1
20	RC720	Screw For Looper Driving Shaft Collar	1
21	RC721	Looper Link Pin (Long)	1
22	RC722	Screw For Looper Link Pin (Long)	2
23	RC723	Looper Link	1
24	RC724	Looper Link Pin (Short)	1
25	RC725	Screw For Looper Link Pin (Short)	1
26	RC726	Looper Oscillating Lever	1
27	RC727	Screw For Looper Oscillating Lever	2
28	RC728	Looper Holder Bracket (Model RC-8D)	1
29	RC729	Screw For Looper Holder Bracket	2
30	RC730	Looper (Model RC-8D)	2
31	RC731	Screw For Looper	4

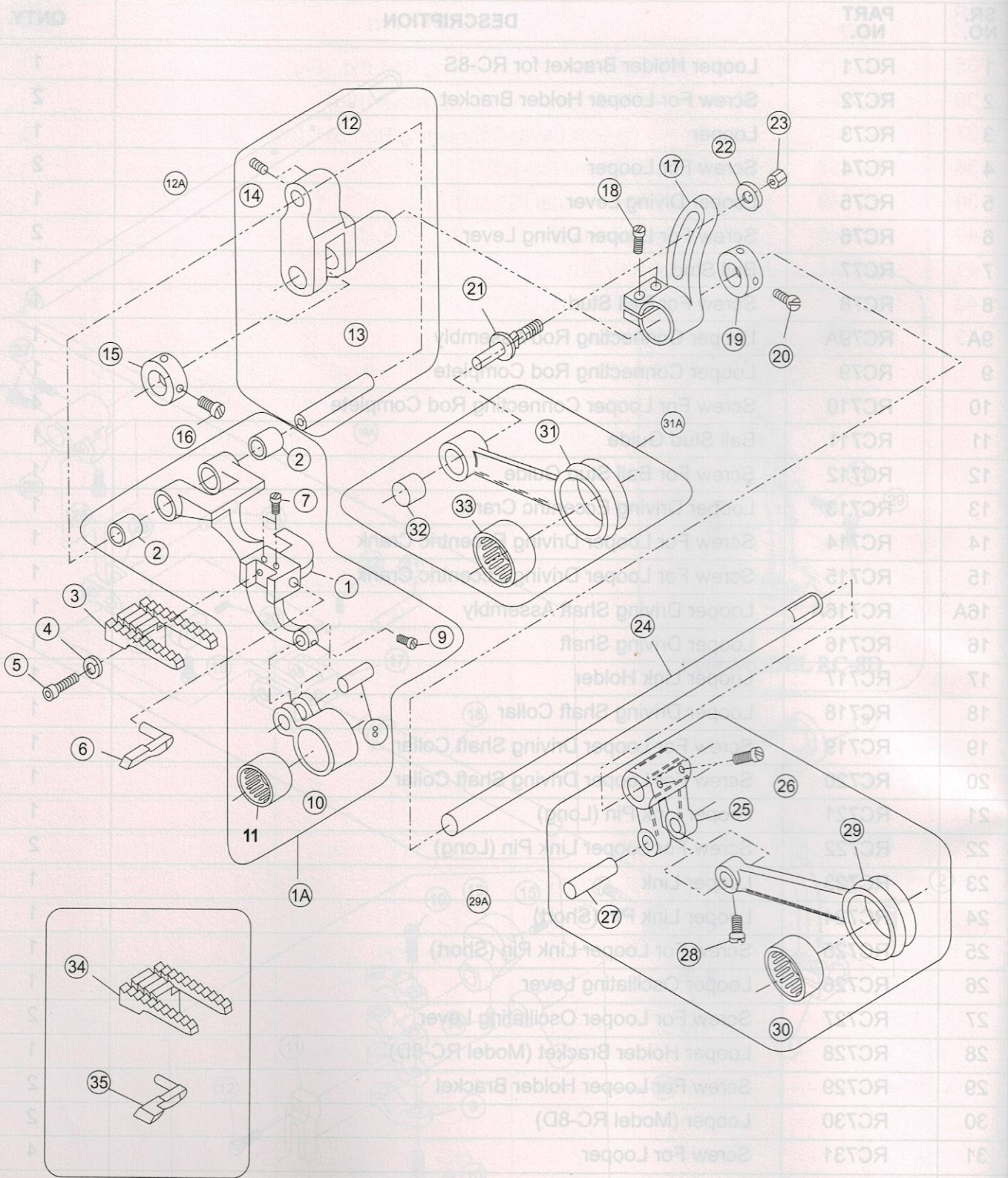
# (7) LOOPER DRIVING MECHANISM



## (7) LOOPER DRIVING MECHANISM

SR. NO.	PART NO.	DESCRIPTION	QNTY.
1	RC71	Looper Holder Bracket for RC-8S	1
2	RC72	Screw For Looper Holder Bracket	2
3	RC73	Looper	1
4	RC74	Screw For Looper	2
5	RC75	Looper Diving Lever	1
6	RC76	Screw For Looper Diving Lever	2
7	RC77	Ball Stud	1
8	RC78	Screw For Ball Stud	1
9A	RC79A	Looper Connecting Rod Assembly	1
9	RC79	Looper Connecting Rod Complete	1
10	RC710	Screw For Looper Connecting Rod Complete	4
11	RC711	Ball Stud Guide	1
12	RC712	Screw For Ball Stud Guide	1
13	RC713	Looper Driving Eccentric Crank	1
14	RC714	Screw For Looper Driving Eccentric Crank	1
15	RC715	Screw For Looper Driving Eccentric Crank	1
16A	RC716A	Looper Driving Shaft Assembly	1
16	RC716	Looper Driving Shaft	1
17	RC717	Looper Link Holder	1
18	RC718	Looper Driving Shaft Collar	1
19	RC719	Screw For Looper Driving Shaft Collar	1
20	RC720	Screw For Looper Driving Shaft Collar	1
21	RC721	Looper Link Pin (Long)	1
22	RC722	Screw For Looper Link Pin (Long)	2
23	RC723	Looper Link	1
24	RC724	Looper Link Pin (Short)	1
25	RC725	Screw For Looper Link Pin (Short)	1
26	RC726	Looper Oscillating Lever	1
27	RC727	Screw For Looper Oscillating Lever	2
28	RC728	Looper Holder Bracket (Model RC-8D)	1
29	RC729	Screw For Looper Holder Bracket	2
30	RC730	Looper (Model RC-8D)	2
31	RC731	Screw For Looper	4
30	RC830	Needle Finer Bearing	1
31A	RC831A	Feed Dog Driving Connecting Rod Assembly	1
31	RC831	Feed Dog Driving Connecting Rod	1

# (8) FEED DRIVING MECHANISM





## (8) FEED DRIVING MECHANISM

SR. NO.	PART NO.	DESCRIPTION	QNTY.
1	50281	Feed Bar Bracket	1
1A	RC81A	Feed Bar Bracket Assembly	1
1	RC81	Feed Bar Bracket	1
2	RC82	Needle Roller Bearing	2
3	RC83	Feed Dog for RC-8S	1
4	RC84	Washer For Feed Dog	2
5	RC85	Screw For Feed Dog	1
6	RC86	Needle Support for RC-8S	1
7	RC87	Screw For Needle Support	2
8	RC88	Feed Dog Driving Lever Link Pin	1
9	RC89	Screw For Feed Dog Driving Lever Link Pin	1
10	RC810	Feed Dog Driving Lever	1
11	RC811	Needle Roller Bearing	1
12A	RC812A	Feed Bar Assembly	1
12	RC812	Feed Bar	1
13	RC813	Feed Bar Pin	1
14	RC814	Screw For Feed Bar Pin	2
15	RC815	Feed Bar Shaft Collar (Left)	1
16	RC816	Screw For Feed Bar Shaft Collar (Left)	2
17	RC817	Feed Bar Lever	1
18	RC818	Screw For Feed Bar Lever	2
19	RC819	Feed Bar Shaft Collar (Right)	1
20	RC820	Screw For Feed Bar Shaft Collar (Right)	2
21	RC821	Feed Dog Driving Connecting Rod Pin	1
22	RC822	Washer Feed Dog Driving Connecting Rod Pin	1
23	RC823	Nut For Feed Dog Driving Connecting Rod Pin	1
24	RC824	Feed Bar Shaft	1
25	RC825	Looper Driving Lever	1
26	RC826	Screw For Looper Driving Lever	2
27	RC827	Looper Driving Lever Link Pin	1
28	RC828	Screw For Looper Driving Lever Link Pin	1
29A	RC829A	Looper Oscillating Rod Assembly	1
29	RC829	Looper Oscillating Rod	1
30	RC830	Needle Roller Bearing	1
31A	RC831A	Feed Dog Driving Connecting Rod Assembly	1
31	RC831	Feed Dog Driving Connecting Rod	1

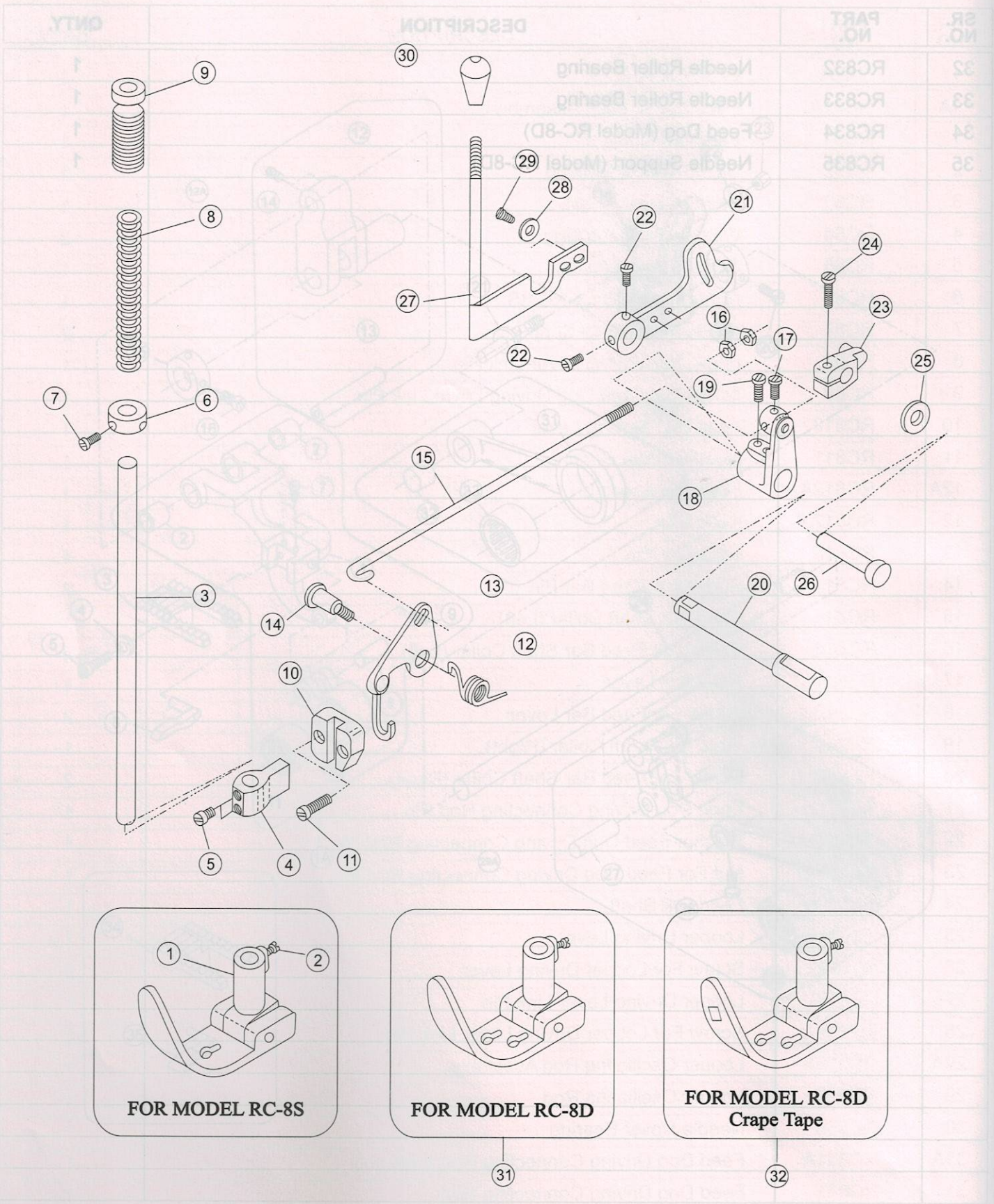
# (8) FEED DRIVING MECHANISM

SR. NO.	PART NO.	DESCRIPTION	QNTY.
1	50281	Feed Bar Bracket	1
1A	RC81A	Feed Bar Bracket Assembly	1
1	RC81	Bar Bracket	1
2	RC82	Roller Bearing	2
3	RC83	Pin for RC82	3
4	RC84	Feed Dog	4
5	RC85	Feed Dog	5
6	RC86	Feed Dog	6
7	RC87	Feed Dog Driving Level Link	7
8	RC88	Feed Dog Driving Level Link	8
9	RC89	Feed Dog Driving Level Link	9
10	RC810	Feed Dog Driving Level Link	10
11	RC811	Feed Dog Driving Level Link	11
12A	RC812A	Feed Bar Pin	12A
12	RC812	Feed Bar Pin	12
13	RC813	Feed Bar Pin	13
14	RC814	Feed Bar Pin	14
15	RC815	Screw For Feed Bar Pin	15
16	RC816	Feed Bar Collar (L&R)	16
17	RC817	Feed Bar Collar (L&R)	17
18	RC818	Feed Bar Collar (L&R)	18
19	RC819	Feed Bar Collar (L&R)	19
20	RC820	Feed Bar Collar (L&R)	20
21	RC821	Feed Bar Collar (L&R)	21
22	RC822	Feed Bar Collar (L&R)	22
23	RC823	Feed Bar Collar (L&R)	23
24	RC824	Feed Bar Collar (L&R)	24
25	RC825	Feed Bar Collar (L&R)	25
26	RC826	Feed Bar Collar (L&R)	26
27	RC827	Feed Bar Collar (L&R)	27
28	RC828	Feed Bar Collar (L&R)	28
29	RC829	Feed Bar Collar (L&R)	29
29A	RC829A	Feed Bar Collar (L&R)	29A
30	RC830	Feed Bar Collar (L&R)	30
31	RC831	Feed Bar Collar (L&R)	31
31A	RC831A	Feed Bar Collar (L&R)	31A
32	RC832	Feed Bar Collar (L&R)	32
33	RC833	Feed Bar Collar (L&R)	33
34	RC834	Feed Bar Collar (L&R)	34
35	RC835	Feed Bar Collar (L&R)	35

## (8) FEED DRIVING MECHANISM

SR. NO.	PART NO.	DESCRIPTION	QNTY.
32	RC832	Needle Roller Bearing	1
33	RC833	Needle Roller Bearing	1
34	RC834	Feed Dog (Model RC-8D)	1
35	RC835	Needle Support (Model RC-8D)	1
5	RC95	Screw For Presser Foot Bar Connecting Bracket	2
6	RC96	Presser Foot Bar Collar	1
7	RC97	Screw For Presser Foot Bar Collar	2
8	RC98	Presser Foot Bar Spring	1
9	RC99	Presser Foot Bar Spring Rebuilding Knob	1
10	RC100	Presser Foot Bar Guide	1
11	RC101	Screw For Presser Foot Bar Guide	2
12	RC102	Presser Foot Lifter Spring	1
13	RC103	Presser Foot Lifter Driving Lever	1
14	RC104	Screw For Presser Foot Lifter Driving Lever	1
15	RC105	Presser Foot Lifter Connecting Rod	1
16	RC106	Pin For Presser Foot Lifter Connecting Rod	2
17	RC107	Screw For Presser Foot Lifter Connecting Rod	1
18	RC108	Presser Foot Lifter Link Lever	1
19	RC109	Screw For Presser Foot Lifter Link Lever	2
20	RC110	Presser Foot Lifter Shaft	1
21	RC111	Presser Foot Lifter Lever (Handle)	1
22	RC112	Screw For Presser Foot Lifter Lever (Handle)	2
23	RC113	Tension Release Lever	1
24	RC114	Screw For Tension Release Lever	1
25	RC115	Washer For Tension Release Lever	1
26	RC116	Tension Release Shaft	1
27	RC117	Presser Foot Lifter Lever Handle	1
28	RC118	Washer For Presser Foot Lifter Lever	2
29	RC119	Screw For Presser Foot Lifter Lever	2
30	RC120	Knob For Presser Foot Lifter Lever Handle	1
31	RC121	Presser Foot (Model RC-8D)	1
32	RC122	Presser Foot with Grater for RC-8D	1

# (9) PRESSURE FOOT & BAR LIFTER MECHANISM



FOR MODEL RC-8S

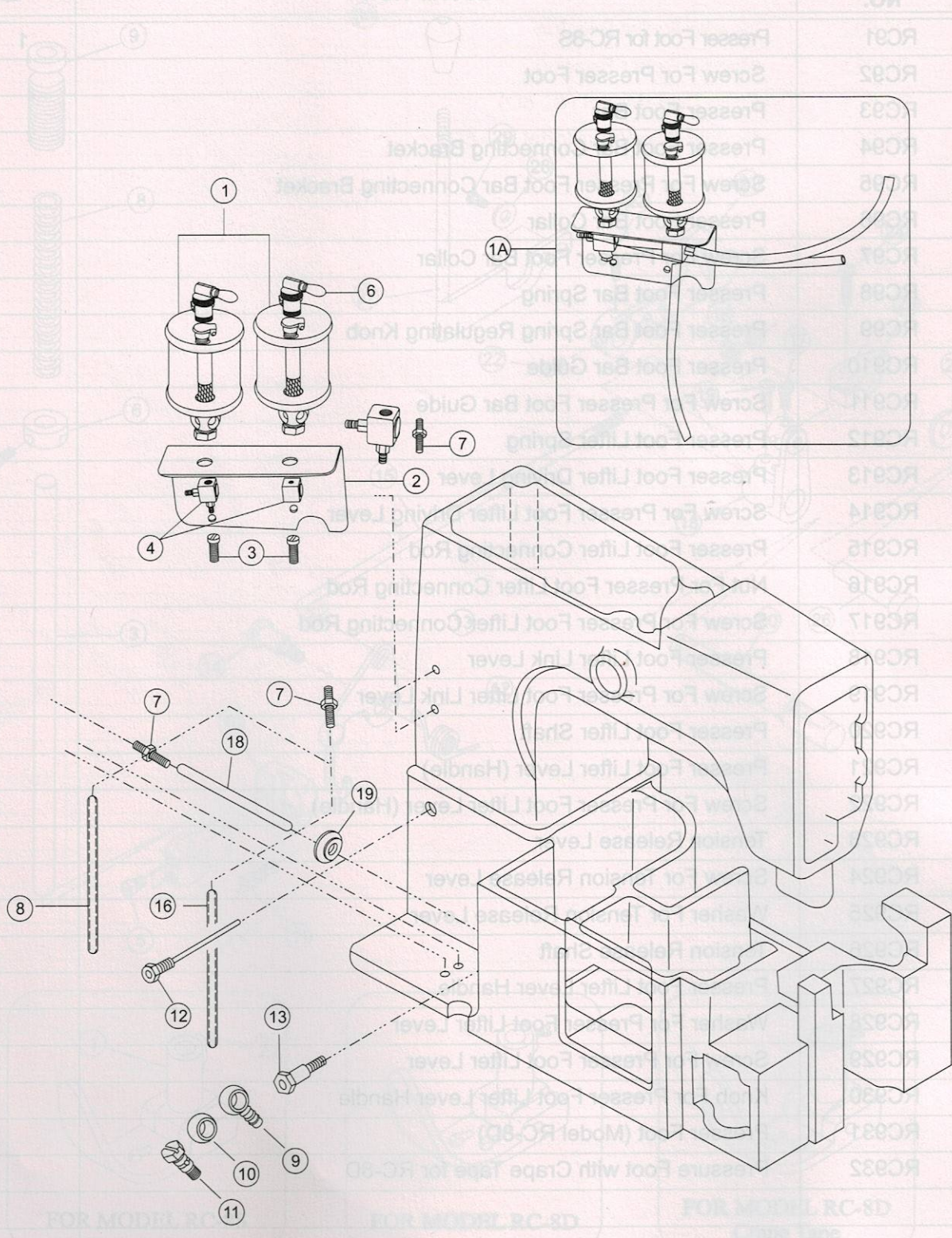
FOR MODEL RC-8D

FOR MODEL RC-8D  
Crape Tape

## (9) PRESSURE FOOT & BAR LIFTER MECHANISM

SR. NO.	PART NO.	DESCRIPTION	QNTY.
1	RC91	Presser Foot for RC-8S	1
2	RC92	Screw For Presser Foot	1
3	RC93	Presser Foot Bar	1
4	RC94	Presser Foot Bar Connecting Bracket	1
5	RC95	Screw For Presser Foot Bar Connecting Bracket	2
6	RC96	Presser Foot Bar Collar	1
7	RC97	Screw For Presser Foot Bar Collar	2
8	RC98	Presser Foot Bar Spring	1
9	RC99	Presser Foot Bar Spring Regulating Knob	1
10	RC910	Presser Foot Bar Guide	1
11	RC911	Screw For Presser Foot Bar Guide	2
12	RC912	Presser Foot Lifter Spring	1
13	RC913	Presser Foot Lifter Driving Lever	1
14	RC914	Screw For Presser Foot Lifter Driving Lever	1
15	RC915	Presser Foot Lifter Connecting Rod	1
16	RC916	Nut For Presser Foot Lifter Connecting Rod	2
17	RC917	Screw For Presser Foot Lifter Connecting Rod	1
18	RC918	Presser Foot Lifter Link Lever	1
19	RC919	Screw For Presser Foot Lifter Link Lever	2
20	RC920	Presser Foot Lifter Shaft	1
21	RC921	Presser Foot Lifter Lever (Handle)	1
22	RC922	Screw For Presser Foot Lifter Lever (Handle)	2
23	RC923	Tension Release Lever	1
24	RC924	Screw For Tension Release Lever	1
25	RC925	Washer For Tension Release Lever	1
26	RC926	Tension Release Shaft	1
27	RC927	Presser Foot Lifter Lever Handle	1
28	RC928	Washer For Presser Foot Lifter Lever	2
29	RC929	Screw For Presser Foot Lifter Lever	2
30	RC930	Knob For Presser Foot Lifter Lever Handle	1
31	RC931	Presser Foot (Model RC-8D)	1
32	RC932	Pressure Foot with Crape Tape for RC-8D	1

# (10) OIL LUBRICATING SYSTEM



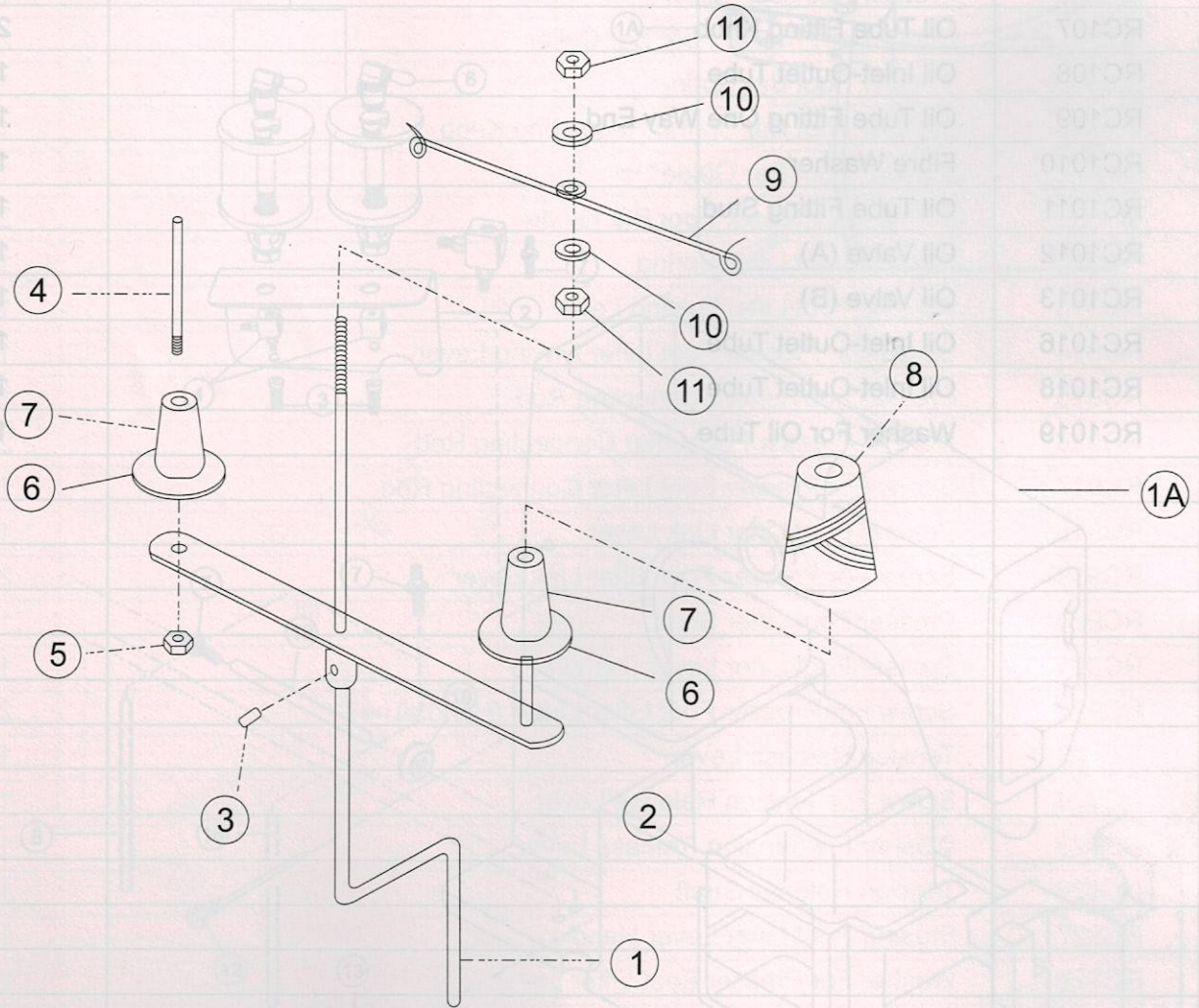
QTY.	DESCRIPTION	PART NO.	SER. NO.
1	Presser Foot for RC-8D	RC81	1
1	Screw For Presser Foot	RC82	2
1	Presser Foot for RC-8D	RC83	3
1	Presser Foot Connecting Bracket	RC84	4
2	Screw For Presser Foot Connecting Bracket	RC85	5
1	Presser Foot Spring	RC86	6
2	Presser Foot Collar	RC87	7
1	Presser Foot Spring Regulating Knob	RC88	8
1	Presser Foot Bar Guide	RC89	9
2	Screw For Presser Foot Bar Guide	RC90	10
1	Presser Foot Lifter	RC91	11
1	Presser Foot Lifter Lever	RC92	12
1	Screw For Presser Foot Lifter Lever	RC93	13
1	Presser Foot Lifter Connecting Rod	RC94	14
1	Presser Foot Lifter Connecting Rod	RC95	15
2	Presser Foot Lifter Connecting Rod	RC96	16
1	Presser Foot Lifter Connecting Rod	RC97	17
1	Presser Foot Lifter Lever	RC98	18
2	Screw For Presser Foot Lifter Lever	RC99	19
1	Presser Foot Lifter Spring	RC100	20
1	Presser Foot Lifter Knob	RC101	21
2	Presser Foot Lifter Spring	RC102	22
1	Presser Foot Lifter Lever	RC103	23
1	Presser Foot Lifter Lever	RC104	24
1	Presser Foot Lifter Lever	RC105	25
1	Presser Foot Lifter Lever	RC106	26
1	Presser Foot Lifter Lever	RC107	27
2	Presser Foot Lifter Lever	RC108	28
2	Presser Foot Lifter Lever	RC109	29
1	Presser Foot Lifter Lever	RC110	30
1	Presser Foot Lifter Lever	RC111	31
1	Presser Foot Lifter Lever	RC112	32

## (10) OIL LUBRICATING SYSTEM

SR. NO.	PART NO.	DESCRIPTION	QNTY.
1A	RC101A	Oil Reservoir Assembly	1
1	RC101	Oil Reservoir	1
2	RC102	Oil Reservoir Support Plate	1
3	RC103	Screw For Oil Reservoir Holder Bracket	2
4	RC104	Oil Reservoir Body Lining Stud	2
6	RC106	Oil On-Off pin Assembly	2
7	RC107	Oil Tube Fitting Knob	2
8	RC108	Oil Inlet-Outlet Tube	1
9	RC109	Oil Tube Fitting One Way End	1
10	RC1010	Fibre Washer	1
11	RC1011	Oil Tube Fitting Stud	1
12	RC1012	Oil Valve (A)	1
13	RC1013	Oil Valve (B)	1
16	RC1016	Oil Inlet-Outlet Tube	1
18	RC1018	Oil Inlet-Outlet Tube	1
19	RC1019	Washer For Oil Tube	1

# (11) THREAD STAND PARTS

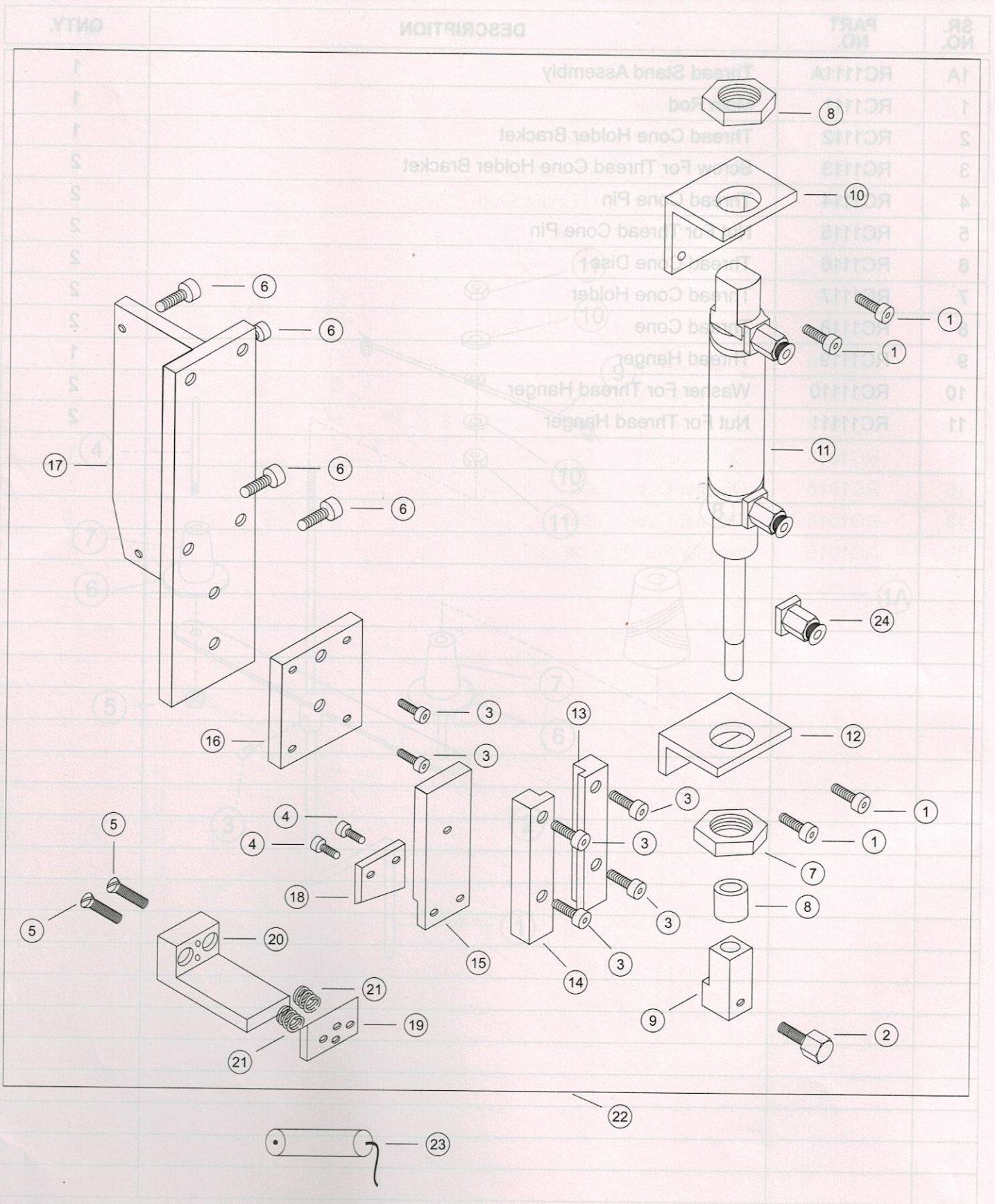
QTY	DESCRIPTION	PART NO.	SR. NO.
1	Oil Reservoir Assembly	RC101A	1A
1	Oil Reservoir	RC101	1
1	Oil Reservoir Support Plate	RC102	2
2	Screw For Oil Reservoir	RC103	3
2	Oil Reservoir Body Lining Stud	RC104	4
2	Oil On Oil Air Assembly	RC105	5
2	Oil Tube Fitting (A)	RC107	7
1	Oil Inlet-Outlet Tube	RC108	8
1	Oil Tube Fitting (B)	RC109	9
1	Fibre Washer	RC1010	10
1	Oil Tube Fitting (C)	RC1011	11
1	Oil Valve (A)	RC1012	12
1	Oil Valve (B)	RC1013	13
1	Oil Inlet-Outlet Tube	RC1018	18
1	Oil Inlet-Outlet Tube	RC1018	18
1	Washer For Oil Tube	RC1019	19







# (12) PNEUMATIC CUTTER PARTS





EXPANDED LIST OF AUTOMATIC CUTTER PARTS

SR. NO.	PART NO.	DESCRIPTION	QTY.
1	C1	Clamp Screw	4
2	C2	Cylinder Clamp Screw	1
3	C3	Plate Guide Screw	8
4	C4	Upper Cutter Screw	2
5	C5	Lower Cutter Holder Screw	2
6	C6	Face Cover Screw	4
7	C7	Cylinder Nut	2
8	C8	Cylinder Nut	1
9	C9	Cylinder Holder	1
10	C10	Cylinder Clamp	1
11	C11	Cylinder	1
12	C12	Cylinder Clamp	1
13	C13	Plate Guide	1
14	C14	Plate Guide	1
15	C15	Cutter Slide	1
16	C16	Cutter Slide Base	1
17	C17	Cylinder Base	1
18	C18	Upper Cutter	1
19	C19	Lower Cutter	1
20	C20	Lower Cutter Holder	1
21	C21	Cutter Spring	2
22	C22	Senior Cutter Assembly Complete	2
23	C23	Senior	2
24	C24	Elbow Joint	1

Manufacturers

**SWARUP MECHANICAL WORKS**

OFFICE & FACTORY - B-XXX-69, KAILASH NAGAR, SHERPUR BYE-PASS,  
 LUDHIANA - 141 010. (INDIA) TELEPHONE : 5209950 TO 56. FAX : 91-161-5209958  
 INTERNET : [www.revoindia.com](http://www.revoindia.com) [www.sewingnet.com](http://www.sewingnet.com) E-MAIL : [sales@revoindia.com](mailto:sales@revoindia.com)