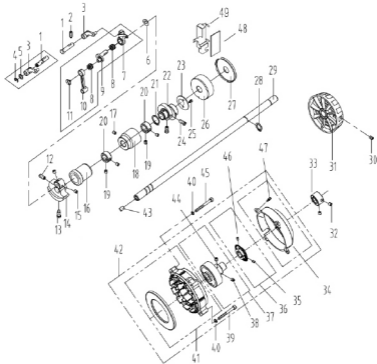


1. 机壳、外装分组件/Machine Frame & Miscellaneous Cover Components

序号 NO	公司件号	Part NO	名称	PartName	零件描述	Description	数量	Number
1	101511001		螺钉SM3/16"×28 L=9		Screw SM3/16"×28 L=9		3	
2	10122003		面板调节孔螺塞		Rubber plug		2	
3	13837002		商标牌		Head card		1	
4	10112071		面板		Face plate		1	
5	13813005		左线钩		Thread guide left		1	
6	101511007		螺钉SM11/64"×40 L=6		Screw SM11/64"×40 L=6		1	
7	10122114		面板垫		Face plate gasket		1	
8	101511027		螺钉SM1/8"×44 L=3.4		Screw SM1/8"×44 L=3.4		1	
9	11412062		面部防油板 (厚料)		Face oil shield asm (H)		1	
11	10122013		针杆上衬套螺塞		Rubber plug		1	
12	10122005		挑线连杆衬套螺塞		Rubber plug		1	
13	10122004		针杆曲柄螺塞		Rubber plug		1	
14	101511004		螺钉SM3/16"×28 L=7		Screw SM3/16"×28 L=7		1	
15	13812018		挑线杆防护罩		Thread take-up lever cover		1	
16	101511004		螺钉SM3/16"×28 L=7		Screw SM3/16"×28 L=7		1	
17	13512004		三孔线勾		3-hole thread guide		1	
18	10122005		挑线连杆衬套螺塞		Rubber plug		1	
19	114511015		螺钉SM9/64"×40 L=6		Screw SM9/64"×40 L=6		2	
20	11419001		剃线刀		Knife		1	
21	20722002		油塞		Rubber plug		1	
22	110222001		后盖板垫		Side plate gasket		1	
23	10112070		后盖板		Side plate		1	
24	101511001		螺钉SM3/16"×28 L=9		Screw SM3/16"×28 L=9		11	
25	114530001		螺栓M5 L=25		Screw M5 L=25		3	
26	114513001		螺栓M5 L=20		Screw M5 L=20		2	
27	10233004		一体机控制箱		Electronic control box		1	
28	10122006		送料调节器螺塞		Rubber plug		1	
29	10122007		下轴工艺孔塞		Rubber plug		1	
30	101512001		底板支柱		Machine head stud		2	
31	1381300400		小夹线器组件		Thread tension asm.		1	
32	138516019		小夹线器螺母		Thread tension nut		1	
33	11227001		小夹线弹簧		Thread tension spring		1	
34	11212004		小夹线板		Thread tension disk		2	
35	13810008		小夹线器螺柱		Thread tension post		1	
36	138508006		螺钉SM3/16"×28 L=7		Screw SM3/16"×28 L=7		1	
37	13812066		过线板		Thread tension guide plate		1	
38	10113004		右线钩		Thread guide right		1	
39	101511007		螺钉SM11/64"×40 L=6		Screw SM11/64"×40 L=6		1	
40	101515010		螺钉SM15/64"×28 L=10.5		Screw SM15/64"×28 L=10.5		1	
41	10126030		松线钉		Tension release pin		1	
42	10122014		挑线簧调节座O型圈		Rubber ring		1	
43	101515005		螺钉SM9/64"×40 L=5.5		Screw SM9/64"×40 L=5.5		1	
44	10127001		挑线簧		Thread take-up spring		1	
45	10127031		挑线簧 (厚料)		Thread take-up spring (H)		1	
46	10103011		挑线簧调节座		Thread tension base		1	
47	10112005		夹线板		Thread tension disk		2	
48	10112006		松线板		Disk stopper		1	
49	101s30002		夹线螺钉		Thread tension post		1	
50	10127002		夹线弹簧		Thread tension spring		1	
51	11427050		夹线弹簧 (厚料)		Thread tension spring (H)		1	
52	10112007		夹线制动板		Thread disk rotating stopper		1	
53	138516013		夹线螺母		Thread tension nut		1	
54	1381300500		夹线器组件		Thread tension asm		1	
55	1381300700		夹线器组件 (厚料)		Thread tension asm (H)		1	
56	11413011		固定式压线钩		Thread guide		1	
57	401516001		螺母SM9/64"×40		Nut SM9/64"×40		1	
58	101511002		螺钉SM11/64"×40 L=5.5		Screw SM11/64"×40 L=5.5		1	
59	13812019		卷边脚座		Ruler stop seat		1	
60	104517002		螺钉SM11/64"×40 L=6.5		Screw SM11/64"×40 L=6.5		2	
61	11414006		针板		Needle plate		1	
62	11315001		针板 (厚料)		Needle plate (H)		1	
63	10115002		推板		Slide plate		1	
64	10127009		推板簧		Slide plate spring		1	
65	101511019		螺钉SM3/32"×56 L=2		Screw SM3/32"×56 L=2		2	
66	1013001900		LED灯开关组件		LED asm		1	
67	101511001		螺钉SM3/16"×28 L=9		Screw SM3/16"×28 L=9		1	
68	W01009		垫圈5		Washer 5		2	
69	10122110		橡皮塞 (单孔)		Rubber plug (one-hole)		1	
70	114s30018		螺栓M5 L=37		Screw M5 L=37		1	

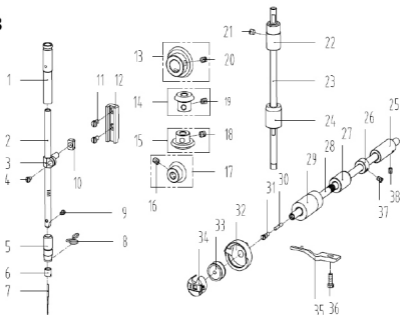
2



2. 上轴挑线分组件/Main Shaft & Thread Take-up Components

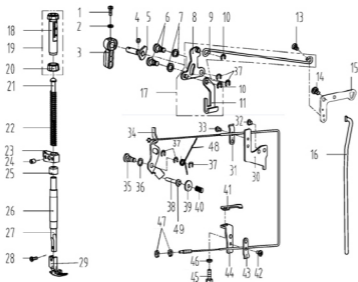
序号 NO	公司件号 Part NO	名称 PartName	零件描述 Description	数量 Number
1	11326013	挑线连杆销	Thread take-up connecting rod pin	1
	10126001	挑线连杆销 (厚料)	Thread take-up connecting rod pin (H)	1
2	101515001	螺钉SM15/64*x28 L=15	Screw SM15/64*x28 L=15	1
	10105001	挑线连杆 (厚料)	Thread take-up connecting rod (H)	1
3	11305010	挑线连杆	Thread take-up connecting rod	1
4	H05013	开口挡圈 6	Snap ring 6	1
5	11328010	垫片	washer	1
6	10112003	针杆曲柄护板	Needle bar crank protecting plate	1
7	1013800100	挑线杆分组件	Thread take-up lever asm	1
	1133800200	挑线杆分组件 (厚料)	Thread take-up lever asm (H)	1
8	10124001	挑线杆滚针轴承	Needle bearing	2
	11310012	挑线曲柄分部件	Thread take-up crank	1
9	11310010	挑线曲柄分部件 (H-M)	Thread take-up crank (H-M)	1
	1011000400	挑线曲柄分部件 (厚料)	Thread take-up crank (H)	1
10	10105002	针杆连杆	Needle bar connecting rod	1
11	101517001	螺钉SM9/64*x40 (左旋) L=4.8	Screw SM9/64*x40 (left hand) L=4.8	1
12	101515004	螺钉SM9/32*x28 L=16	Screw SM9/32*x28 L=16	1
13	101511003	螺钉SM9/32*x28 L=16	Screw SM9/32*x28 L=16	1
14	10404001	针杆曲柄	Needle bar crank	1
	11404035	针杆曲柄 (厚料)	Needle bar crank (H)	1
15	101515002	螺钉SM1/4*x40 L=6	Screw SM1/4*x40 L=6	2
16	1010300400	上轴前轴套组件	Main shaft bushing front	1
17	101515006	螺钉SM15/64*x28 L=7	Screw SM15/64*x28 L=7	1
18	12203002	主轴中轴套	Main shaft bushing mid	1
19	101514001	螺钉SM1/4*x40 L=6	Screw SM 1/4*x40 L=6	2
20	10108001	上轴挡圈	Main shaft thrust collar	2
21	H03002	挡圈20	Snap ring 20	1
	11310014	送料偏心轮	Feed eccentric cam	1
22	400006	送料偏心轮 (H-M)	Feed eccentric cam (H-M)	1
	400006	送料偏心轮 (厚料)	Feed eccentric cam (H)	1
23	10112017	送料偏心轮盖板	Cover plate	1
24	101511013	螺钉SM1/4*x40 L=13	Screw SM1/4*x40 L=13	2
25	113511003	螺钉SM9/64*x40 L=5	Screw SM9/64*x40 L=5	2
26	10103026	上轴后轴套	The rear axle sleeve	1
27	10122105	上轴后套挡油油封	Oil seal	1
28	H03001	挡圈15	Snap ring 15	1
29	10202002	上轴	Main shaft	1
30	S10009	螺钉M6 L=8	Screw M6 L=8	2
31	113835001	手轮	Handwheel	1
	S10013	螺钉M6 L=6	Screw M6 L=6	2
33	10208001	电机防尘套	Motor dust cover	1
34	95100220	电机罩壳组件	Motor cover asm	1
35	S09022	螺钉M3 L=4	Screw M3 L=4	2
36	95100116	电机转子总成	Motor rotating sensor asm	1
37	95300004	电机转子总成	Motor rotor	1
38	S09113	螺钉M6 L=6	Screw M6 L=6	2
39	951515010	螺钉M5 L=20	Screw M5 L=20	1
40	W03002	弹垫5	Washer 5	3
41	95300005	电机定子总成	Motor stator	1
42	10233034	光电私服电机 (A2光源)	Motor	1
43	10122012	上轴孔塞	Rubber plug	1
44	S09113	螺钉M6 L=6	Screw M6 L=6	1
45	951515010	螺钉M5 L=20	Screw M5 L=20	2
46	S09022	螺钉M3 L=4	Screw M3 L=4	1
47	951515016	螺钉组合件M4 L=28	Screw asm M4 L=28	4
48	14112004	防油罩	Oil shield	1
49	14123001	防油罩油棉	Oil cotton	1

3



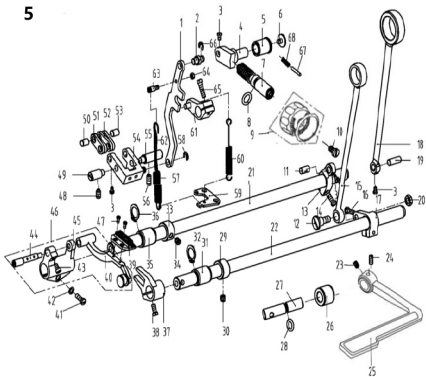
3. 针杆、竖轴、下轴部件/Needle bar & Upright Shaft & Hook Driving Shaft Components

序号 NO	公司件号 Part NO	名称 PartName	零件描述 Description	数量 Number
1	10103009	针杆上衬套	Needle bar bushing upper	1
2	10102002	针杆	Needle bar	1
	10102021	针杆 (厚料)	Needle bar (H)	1
3	10138002	针杆连接柱	Needle bar connecting rod	1
4	101511005	螺钉SM9/64"x40 L=6	Screw SM9/64"x40 L=6	1
	10103010	针杆下衬套	Needle bar bushing lower	1
5	10103023	针杆下衬套 (厚料)	Needle bar bushing lower (H)	1
6	10113002	针杆线勾	Needle bar thread guide	1
	11412063	针杆线勾 (厚料)	Needle bar thread guide (H)	1
7	10117001	机针DBx1#14	Needle DBx1#14	1
	10117002	机针DPx5#21 (厚料)	Needle DPx5#21 (H)	1
	10413001	针杆下衬套线勾	Lower bushing thread guide	1
8	10113009	针杆下衬套线勾 (厚料)	Lower bushing thread guide (H)	1
9	104511006	螺钉SM11/8"x44 L=4.5	Screw SM11/8"x44 L=4.5	1
10	10109001	针杆连接柱滑块	Slide block	1
11	101511008	螺钉SM11/64"x40 L=8	Screw SM11/64"x40 L=8	2
12	10109002	针杆接头滑块导轨	Needle bar guide	1
13	10425004	上轴伞齿轮	Upper shaft bevel gear	1
14	10425003	竖轴上伞齿轮	Upper small bevel gear asm	1
15	10425002	竖轴下伞齿轮	lower large bevel gear asm	1
16	101515007	螺钉SM11/4"x40 L=7	Screw SM11/4"x40 L=7	2
17	10425001	下轴伞齿轮	Hook drive shaft bevel gear	1
18	101515007	螺钉SM11/4"x40 L=7	Screw SM11/4"x40 L=7	2
19	101515007	螺钉SM11/4"x40 L=7	Screw SM11/4"x40 L=7	2
20	101515007	螺钉SM11/4"x40 L=7	Screw SM11/4"x40 L=7	2
21	113511036	螺钉SM15/64"x28 L=4.7	Screw SM15/64"x28 L=4.7	1
22	113803012	竖轴上轴套	Upright shaft bushing upper	1
23	10102007	竖轴	Upright shaft	1
24	10403013	竖轴下轴套	Upright shaft bushing lower	1
25	113803014	下轴后轴套	Hook driving shaft bushing back	1
26	10108002	下轴挡圈	Hook driving shaft snap ring	1
27	11303021	下轴中套	Lower shaft middle bushing	1
28	13802303	下轴	Hook driving shaft	1
29	13803320	下轴前轴套	Hook driving shaft bushing front	1
30	13823001	下轴限油芯	Oil wick	1
31	101530005	下轴限油螺钉	set screw	1
32	11418007	旋梭	Hook asm	1
	11418002	旋梭 (厚料)	Hook asm (H)	1
33	10118003	梭心	Bobbin	1
34	11218504	梭壳	Bobbin case asm	1
	10112016	旋梭定位钩	Finger postioner	1
	10112032	旋梭定位钩 (厚料)	Finger postioner (H)	1
36	116511005	螺钉SM11/64"x40 L=13	Screw SM11/64"x40 L=13	1
37	101511012	螺钉SM11/64"x40 L=4.8	Screw SM11/64"x40 L=4.8	2
38	113514020	螺钉SM11/64"x40 L=7	Screw SM11/64"x40 L=7	1



4. 压料、自动抬压脚分组件/Presser Bar & Auto Lifter Components

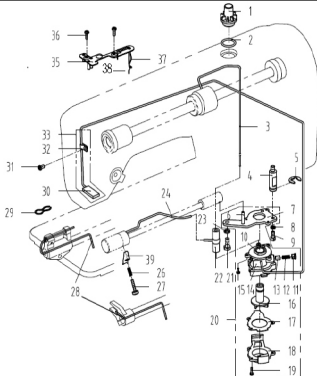
序号 NO	公司件号 Part NO	名称 PartName	零件描述 Description	数量 Number
1	101511010	螺钉SM9/64"x40 L=11	Screw SM9/64"x40 L=11	1
2	10128002	压脚板手螺钉垫圈	Washer	1
3	13811029	压脚板手	Hand lifter	1
4	O01004	O型圈	Rubber ring	1
5	1011000200	压脚板手凸轮分部件	Hand lifter cam asm	1
6	101520001	前杠杆螺钉销	Screw	2
7	10128015	螺纹铜橡胶垫圈	Washer	2
8	1011200100	抬压脚前杠杆分部件	Lift front lever component	1
9	10112013	抬压脚拉杆	Knee lifter pull rod	1
10	H05003	挡圈5	Snap ring 5	2
11	10112010	压脚升降板	Lifting plate	1
12	101520004	抬压脚拉杆螺钉SM3/16"x32	Hinge Screw SM3/16"x32	1
13	101520003	后杠杆轴位螺钉SM15/64"x28	Hinge screw SM15/64"x28	1
14	10112014	抬压脚后杠杆	Knee lifter back lever	1
15	10112015	抬压脚顶杆	Knee lifter connecting rod	1
16	1011200200	抬压脚前杠杆组件	Knee lifter lever asm	1
17	113811018	调压螺钉	Press regulating screw	1
18	1138NS30003	调压螺钉 (厚料)	Press regulating screw (H)	1
19	11381101800	调压螺钉组件	Presser regulating screw nut asm	1
20	13811028	调压螺母	Press regulating nut	1
21	1138NS16005	调压螺母 (厚料)	Press regulating nut (H)	1
22	10102003	调压导杆	Press regulating guide bar	1
23	113827010	调压簧	Press regulating spring	1
24	10127024	调压簧 (厚料)	Press regulating spring (H)	1
25	13809030	压杆导架	Presser bar guide bracket	1
26	101515007	螺钉SM1/4"x40 L=8	Screw SM1/4"x40 L=8	1
27	10122112	压杆防油套	Pressure bar oil cover	1
28	10103012	压杆衬套	Presser bar bushing	1
29	10102004	压杆	Presser bar	1
30	101511009	螺钉SM9/64"x40 L=10.5	Screw SM9/64"x40 L=10.5	1
31	1131600600	压脚组件	Presser foot asm	1
32	1131600100	压脚组件 (厚料)	Presser foot asm(H)	1
33	11212009	松线导管上支架	Wire release bracket upper	1
34	11212008	松线导管压板	Wire release press plate	1
35	101511004	螺钉SM3/16"x28 L=7	Screw SM3/16"x28 L=7	1
36	113511004	螺钉M4 L=8	Screw M4 L=8	1
37	1141206000	松线顶板组件	Wire release plate asm	1
38	101520002	松线顶板橡胶销	Wire release plate pin	1
39	10128015	螺纹铜橡胶垫圈	Washer	1
40	11329020	挡圈5	Snap ring 5	5
41	10126003	松线销钉	Thread release supporting pin	1
42	10128001	松线销钉垫片	washer	1
43	10127003	松线销钉弹簧	Spring	1
44	10112022	旋梭供油管压板	Tube press plate	1
45	113511004	螺钉M4 L=8	Screw M4 L=8	1
46	11212008	松线导管压板	Wire presser	1
47	11312001	松线导管下支架	Wire release bracket lower	1
48	116530003	螺钉SM15/64"x28 L=14.5	Screw SM15/64"x28 L=14.5	1
49	W02004	弹性垫圈	Spring washer	1
50	113512001	螺母 M5	Nut M5	2
51	11427009	松线顶板复位簧	Reset spring	1
52	H05012	松线销钉挡圈	Snap ring	1



5. 送料分组件/Feed Mechanism Components

序号 NO	公司件号 Part NO	名称 PartName	零件描述 Description	数量 Number
1	10105007	倒送料连杆	Reverse feed connecting rod	1
2	11426021	倒送料连杆销	Connecting rod pin	1
3	11326011	倒送料连杆销 (-7)	Connecting rod pin (-7)	1
4	10101053	送料调节器	Feed regulator	1
5	10403017	送料调节器衬套	Feed regulator bushing	1
6	101511023	螺钉SM3/16"x28 L=6.5	Screw SM3/16"x28 L=6.5	1
7	10126045	标盘螺钉	Feed regulator stud	1
8	10122016	送料调节器O形圈	Rubber ring	1
9	1011107000	标盘按钮组件	Knob component	1
10	1011107100	标盘按钮组件 (-7)	Knob component (-7)	1
11	101511022	螺钉SM3/16"x28 L=18	Screw SM3/16"x28 L=18	1
12	10126011	送料曲柄销	Feed rocker crank pin	1
13	101520005	拍牙连杆轴位螺钉 SM9/32"x28	hinge Screw SM9/32"x28	1
14	10104002	送料曲柄	Feed rocker shaft crank	1
15	11304010	送料曲柄 (-7)	Feed rocker shaft crank (-7)	1
16	101511016	螺钉SM3/16"x28 L=14	Screw SM3/16"x28 L=14	1
17	400093	拍牙连杆	Connecting rod	1
18	101511016	螺钉SM3/16"x28 L=14	Screw SM3/16"x28 L=14	1
19	10104004	拍牙后曲柄	Feed driving shaft crank	1
20	400091	送料连杆	Rocker shaft connecting rod	1
21	400083	送料连杆 (-7)	Rocker shaft connecting rod (-7)	1
22	10126006	送料连杆销	Connecting rod pin	1
23	11326011	送料连杆销 (-7)	Connecting rod pin (-7)	1
24	101516003	螺母 SM9/32"x28	Hinge Screw SM9/32"x28	1
25	10102008	送料轴	Feed rocker shaft	1
26	11202001	拍牙轴	Feed driving shaft	1
27	101515006	螺钉SM15/64"x28 L=7	Screw SM15/64"x28 L=7	1
28	101515013	螺钉SM15/64"x28 L=10	ScrewSM15/64"x28 L=10	1
29	10131086	倒送料扳手	Reverse feed lever	1
30	10103024	倒送料轴衬套	Reverse feed shaft bushing back	1
31	10102023	倒送料轴	Reverse feed shaft	1
32	10122017	倒送料轴O形圈	Rubber ring	1
33	10108003	送料轴挡圈	Feed rocker shaft snap ring	2
34	101515002	螺钉 SM1/4"x40 L=6	Screw SM1/4"x40 L=6	4
35	10403015	轴套	Bushing	2
36	H03001	挡圈15	Snap ring 15	2
37	10108003	送料轴挡圈	Feed rocker shaft snap ring	1
38	101515002	螺钉SM1/4"x40 L=6	Screw SM1/4"x40 L=6	2
39	10403015	轴套	Bushing	2
40	H03001	GB/T894.1-1986挡圈15	Snap ring 15	2
41	10104007	拍牙叉形曲柄	Driving shaft crank	1
42	116511005	螺钉SM11/64"x40 L=13	Screw SM11/64"x40 L=13	1
43	11414002	送料牙	Feed dog	1
44	11314001	送料牙 (厚料)	Feed dog (H)	1
45	470060	牙架	Feed bar asm.	1
46	101511016	螺钉SM3/16"x28 L=14	Screw SM3/16"x28 L=14	1
47	10128003	牙架座螺钉垫圈	Washer	1
48	101511025	螺钉SM11/64"x40 L=7	Screw SM11/64"x40 L=7	1
49	10401007	牙架销	Feed bar pin	1
50	480095	牙架座	Feed bar bed	1
51	11380700300	牙架组件 (成品)	Feed bar sam	1
52	101511018	螺钉SM1/8"x44 L=6	Screw SM1/8"x44 L=6	2
53	113514010	螺钉SM15/64"x28 L=10.5	Screw SM15/64"x28 L=10.5	1
54	10126009	送料摆动板座左销	Left pin	1
55	10126007	短摆动板连杆销	Connecting pin	1
56	10109005	送料短摆动板	Feed short shaking plate	2
57	10109004	送料长摆动板	Feed long shaking plate	2
58	10126007	短摆动板连杆销	Connecting pin	1
59	1010100200	送料摆动板座分部件	Feed shaking plate bed	1
60	10126010	送料摆动板座右销	Component right pin	1
61	101515010	螺钉SM15/64"x28 L=10.5	Screw SM15/64"x28 L=10.5	1
62	11427011	送料调节弹簧	Spring	1
63	11329020	开口挡圈5	Snap ring 5	1
64	13812081	拉簧固定板	Pull spring fixing plate	1
65	10127011	倒送料拉簧	Reverse feed pull spring	1
66	1140402700	倒送料曲柄组件	Feed reverse crank asm	1
67	1130402800	倒送料曲柄组件 (-7)	Feed reverse crank asm (-7)	1
68	11321005	油管	Tube	1
69	114530007	螺钉SM11/64"x40 L=7.5	Screw SM11/64"x40 L=7.5	1
70	114516004	螺母SM11/64"x40	Nut SM11/64"x40	1
71	S01102	螺钉SM3/16"x28 L=18	Screw SM3/16"x28 L=18	1
72	11329020	挡圈5	Snap ring 5	1
73	10126015	送料距锁合销	Pin	1
74	10127010	送料距锁合簧	Spring	1

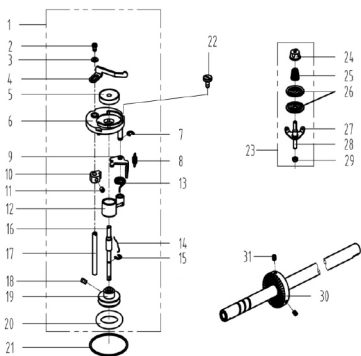
6



6. 润滑、油量检测组件/Oil Lubrication & Oil Measuring Components

序号 NO	公司件号 Part NO	名称 PartName	零件描述 Description	数量 Number
1	11211004	油窗	Oil sight window	1
2	10122019	油窗O形圈	Rubber ring	1
3	14121001	上轴供油管	Main shaft oil tube	1
4	101530008	油泵连接螺栓	Oil pump connecting stud	1
5	11329010	开口挡圈10	Snap ring 10	1
6	10121001	下轴供油管	Hook driving shaft oil tube	1
7	10112020	油泵安装板	Oil pump installing base	1
8	W03002	弹垫	Spring washer	1
9	209512001	螺钉SM11/64"x40 L=10.5	Screw SM11/64"x40 L=10.5	1
10	10103022	油泵体衬套	Oil pump bushing	1
11	101530007	柱塞螺钉M7X0.75 L=5	Plunger Screw M7X0.75 L=5	1
12	10127013	柱塞簧	Plunger spring	1
13	10122018	回油柱塞	Plunger	1
14	10120001	油泵体	Oil pump	1
15	S04093	螺钉M3 L=6	Screw M3 L=6	3
16	10111003	油泵叶轮	Oil pump impeller	1
17	10112021	油泵叶轮托板	Oil pump impeller cover	1
18	10111007	油泵盖	Lubricating oil pump cover	1
19	101530006	螺钉ST2.9 L=10	Screw ST2.9 L=10	3
20	1012000100	油泵分部件	Lubricating oil pump component	1
21	101511026	螺钉SM15/64"x28 L=9	Screw SM15/64"x28 L=9	1
22	10136001	供油管接头	Rubber joint	1
23	W02004	弹垫M6	Spring Washer M6	1
24	13821303	供油管	Hook oil tube	1
26	13827014	油量调节螺钉弹簧	Spring	1
27	113530001	螺钉SM11/64"x40 L=19	Screw SM11/64"x40 L=19	1
28	10423005	油线	Oil wick	1
29	10127015	回油毡夹	Oil felt clamp	1
30	10123006	回油毡	Oil felt felt	1
31	101511004	螺钉SM3/16"x28 L=7	Screw SM3/16"x28 L=7	1
32	10112053	回油管夹	Oil tube clamp	1
33	11502100100	回油管部件	Oil return tube component	1
35	10112025	油线固定板	Oil wick fixing plate	1
36	101511010	螺钉SM9/64"x40 L=11	Screw SM9/64"x40 L=11	2
37	10123010	油线	Oil wick	1
38	10112053	油线夹	Wick	1
39	11312031	热油罩	Oil shield cover	1

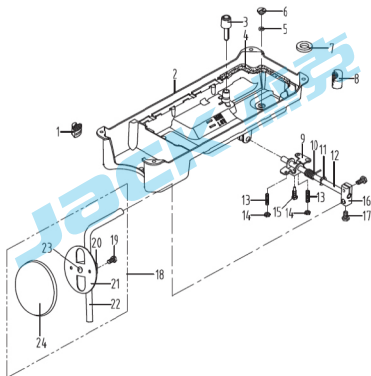
7



7. 绕线器组件/ Bobbin Components

序号 NO	公司件号	Part NO	名称	PartName	零件描述	Description	数量	Number
1	1383103900		绕线器组件		Bobbin winder asm.		1	
2	114511008		螺钉M4 L=6		Screw M4 L=6		1	
3	W01142		垫圈4		Washer 4		1	
4	10113030		压线控制板		Thread press control plate		1	
5	10111120		绕线衬垫		Winding pad		1	
6	13831101		绕线器装置主座		Bobbin winder bed		1	
7	H05006		开口挡圈5		Snap ring		1	
8	10127061		复位板拉簧		Spring		1	
9	13812110		调节板		Regulating plate		1	
10	10110030		绕线凸轮		Bobbin winder cam		1	
11	S09045		螺钉M5 L=5		Screw M5 L=5		1	
12	1380510600		绕线器连杆组件		Bobbin winder connecting rod		1	
13	13827103		调线复位簧		spring		1	
14	10127060		弹簧		Spring		1	
15	H05909		开口挡圈4		Snap ring 4		1	
16	13802111		绕线器主轴		Bobbin winder main shaft		1	
17	13802026		绕线凸轮轴		Bobbin winder cam shaft		1	
18	S09103		螺钉M4 L=4		Screw M4 L=4		2	
19	13831102		绕线轮		Bobbin winder wheel		1	
20	O01110		O型圈		Ring		1	
21	11422062		密封垫		Washer		1	
22	114511003		螺钉SM3/16"×28 L=10		Screw SM3/16"×28 L=10		3	
23	1381300600		底线夹线器		Bobbin thread tension asm.		1	
24	138s16019		夹线螺母		Thread tension nut		1	
25	11427006		小夹线弹簧		Spring		1	
26	10112005		夹线板		Thread tension disk		2	
27	11413022		夹线过线板		Thread tension guide plate		1	
28	112513004		夹线螺钉		Screw		1	
29	114516001		螺母SM11/64"×40		Nut SM11/64"×40		1	
30	11435013		绕线器驱动轮		Driving wheel		1	
31	S10009		螺钉M6 L=8		Screw M6 L=8		2	

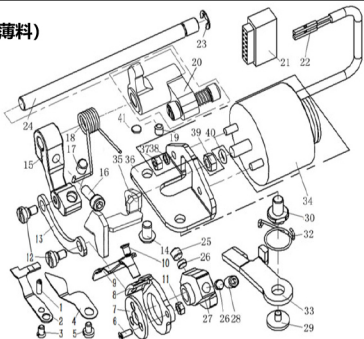
8



8. 油盘、膝抬压脚分组件/Oil Reservoir & Knee Lifter Components

序号 NO	公司件号	Part NO	名称	PartName	零件描述	Description	数量	Number
1	10122022		油盘座垫		Oil reservoir rubber cushion		2	
2	13801020		油盘		Oil Reservoir		1	
3	10111005		抬压脚顶杆		Knee lifter push rod		1	
4	10122020		油盘垫		Oil Reservoir gasket		1	
5	10122021		O型圈		Rubber ring		1	
6	101511028		螺钉SM5/16"×24 L=7		Screw SM5/16"×24 L=7		1	
7	10131001		油盘磁铁		Oil reservoir magnet		1	
8	10122023		油盘支架		Oil reservoir rubber cushion		2	
9	10112027		抬压脚双向曲柄		Knee lifter crank		1	
10	10127016		双向曲柄扭簧		Knee lifter spring		1	
11	H05010		挡圈10		Snap ring 10		1	
12	10102011		抬压脚轴		Knee lifter shaft		1	
13	101515012		螺钉M6 L=30		Screw M6 L=30		2	
14	101516004		螺母 M6 L=4		Nut M6 L=4		2	
15	101512002		螺钉M6 L=26		Screw M6 L=26		1	
16	10101008		抬压脚操纵杆节头		Bearing bracket		1	
17	101512003		螺钉M8 L=16		Screw M8 L=16		2	
18	1011202800		操纵杆组件		Knee press plate asm		1	
19	101512004		螺钉M6 L=11		Screw M6 L=11		1	
20	10112030		操纵杆节头		Knee press plate holder		1	
21	10112029		操纵板		Knee press plate		1	
22	10112028		操纵杆		Knee lifter plate rod		1	
23	10122025		操纵杆垫		Rubber		1	
24	10122024		操纵板软垫		Knee press plate cover		1	

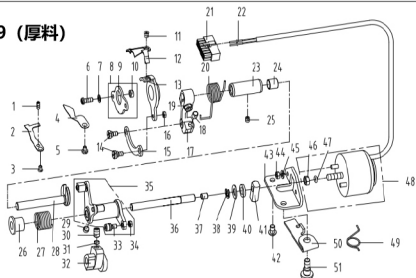
9 (薄料)



9. 切线装置部件 (薄料) /Thread Trimmer Components

序号 NO	公司件号	Part NO	名称	PartName	零件描述	Description	数量	Number
1	113515002		螺钉SM1/8"x44 L=9.5	Screw SM1/8"x44 L=9.5			1	
2	115019001		定刀	Secant knife			1	
3	113517001		螺钉SM9/64"x40 L=6	Screw SM9/64"x40 L=6			1	
4	11312003		护针片	Needle guard patch			1	
5	201511009		螺钉SM9/64"x40 L=5.5	Screw SM9/64"x40 L=5.5			2	
6	138517301		螺钉M3 L=8	Screw M3 L=8			3	
7	13812303		刀架压板	Knife bracket press			1	
8	13807303		刀架	Knife bracket			1	
9	11319002		活动刀	Moterial knife			1	
10	113517002		螺钉SM11/64"x40 L=4.4	Screw SM11/64"x40 L=4.4			2	
11	114516004		螺母SM11/64"x40	Nut SM11/64"x40			1	
12	113520001		连杆螺钉SM11/64"x40	hinge screw SM11/64"x40			2	
13	13812302		连杆	Connecting rod			1	
14	101511026		螺钉SM15/64"x28 L=9	Screw SM15/64"x28 L=9			1	
15	13804301		切线曲柄	Thread Crank			1	
16	S05004		螺钉M5 L=14	Screw M5 L=14			1	
17	11322001		驱动曲柄止动块	Crank driver stopper block			1	
18	13827304		弹簧	Spring			1	
19	S09019		螺钉M5 L=5	Screw M5 L=5			2	
20	1380432300		剪线驱动组件	Crank asm			1	
21	11230004		14孔接线器	Plug			1	
22	11230005		电线插针	Pin			1	
23	H05013		挡圈6	Snap ring 6			1	
24	13802320		切线驱动轴	Tangent drive shaft			1	
25	101514001		螺钉SM1/4"x40 L=6	Screw SM1/4"x40 L=6			1	
26	11309030		凸轮顶柱	Push rod			2	
27	13810306		凸轮	Cam			1	
28	116514005		螺钉SM1/4"x40 L=10	Screw SM1/4"x40 L=10			1	
29	138501302		螺钉M4 L=5	Screw M4 L=5			1	
30	138530301		松线螺钉	Screw			1	
32	13827303		松线扭簧	Loose wire torsion spring			1	
33	13812304		松线板	Thread release bed			1	
34	1383003300		剪线电磁铁组件	Thread trimmer solenoid asm.			1	
35	13812370		推板	Push plate			1	
36	11312006		切线磁铁支架	Solenoid bracket			1	
37	N01005		螺母M4	Nut M4			2	
38	W02018		弹簧垫圈4	Washer 4			2	
39	112516006		螺母SM1/4"x40	Nut SM1/4"x40			1	
40	113822005		垫圈	Washer			1	
41	113809001		垫片	Washer			1	

9 (厚料)



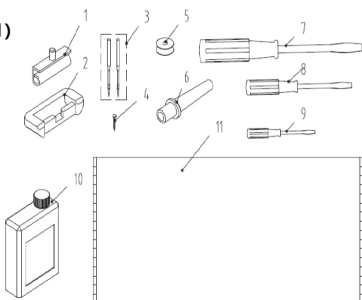
9. 切线装置部件 (厚料) /Thread Trimmer Components (H) (1)

序号NO	公司件号	Part NO	名称	PartName	零件描述	Description	数量	Number
1	113515002		螺钉SM1/8"x44 L=9.5	Screw SM1/8"x44 L=9.5			1	
2	115019001		定刀	Secant knife			1	
3	113517001		螺钉SM9/64"x40 L=6	Screw SM9/64"x40 L=6			1	
4	11312003		护针片	Needle guard patch			1	
5	201511009		螺钉SM9/64"x40 L=5.5	Screw SM9/64"x40 L=5.5			1	
6	113511001		螺钉SM11/64"x40 L=12	Screw SM11/64"x40 L=12			2	
7	10128003		牙架座螺钉垫圈	Washer			2	
8	1381203100		刀架压板组件	Knife bracket press component			1	
9	13812031		刀架压板	Knife bracket press			1	
10	13803012		短套	Short bushing			2	
11	113517002		螺钉SM11/64"x40 L=4.4	Screw SM11/64"x40 L=4.4			2	
12	114119002		活动刀	Moterial knife			1	
13	11307001		剪线刀架	Knife bracket			1	
14	113520001		螺钉SM11/64"x40 L=6.5	Screw SM11/64"x40 L=6.5			2	
15	11312005		连杆	Connecting rod			1	
16	114516004		螺母SM11/64"x40	Nut SM11/64"x40			1	
17	11304001		曲柄	Crank			1	
18	113822014		驱动曲柄止动块	Crank driver stopper block			1	
19	S05004		螺钉M5 L=14	Screw M5 L=14			1	
20	11327001		弹簧	Spring			1	
21	11230004		14孔接线器	Plug			1	
22	11230005		电线插针	Pin			1	
23	11303003		切线轴套	Thread cutting shaft bushing			1	

9. 切线装置部件 (厚料) /Thread Trimmer Components (H) (2)

序号NO	公司件号	Part NO	名称	PartName	零件描述	Description	数量	Number
24	11503005		驱动曲柄轴衬套		Crank drive shaft bushing		1	
25	113514020		螺钉SM11/64"x40 L=6		Screw SM11/64"x40 L=6		1	
26	11322002		扭簧端盖		Spring cover		1	
27	11327002		弹簧		Spring		1	
28	11304002		切线凸轮曲柄轴		Crank shaft		1	
29	101514001		螺钉SM1/4"x40 L=6		Screw SM1/4"x40 L=6		1	
30	116514005		螺钉SM1/4"x40 L=10		Screw SM1/4"x40 L=10		2	
31	11309030		凸轮顶柱		Push rod		2	
32	11310011		凸轮		Cam		1	
33	11324001		滚柱		Roolling pin		1	
34	1138NS16007		螺母SM11/64"x40		Nut SM11/64"x40		1	
35	1130400500		剪线驱动组件		Thread trimmer drive asm		1	
36	11302002		轴		Shaft		1	
37	11322001		驱动曲柄止动块		Positioning block		1	
38	H05013		GB/T896-1986挡圈6		Snap ring 6		1	
39	10112003		衬杆曲柄护板		Cunter weight protecting		1	
40	11322003		电磁铁缓冲垫		Solenoid cushion rubber		1	
41	11309001		切线电磁铁顶销		Solenoid pin		1	
42	101511026		螺钉SM15/64"x28 L=9		Screw SM15/64"x28 L=9		1	
43	11312006		切线磁铁支架		Solenoid bracket		1	
44	N01005		螺母 M4		Nut M4		2	
45	W02018		GB/T93-1987弹簧垫圈4		Washer 4		2	
46	112516006		螺母SM1/4"x40		Nut SM1/4"x40		1	
47	113822005		垫圈		Washer		1	
48	1023000100		剪线电磁铁组件		Thread trimmer solenoid asm.		1	
49	11327003		弹簧		Spring		1	
50	11312007		松线座		Thread release bed		1	
51	113520002		螺钉SM1/4"x28 L=13		Screw SM1/4"x28 L=13		1	

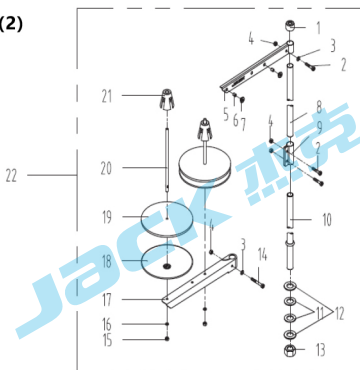
10 (1)



10. 机头附件 (1) /Machine Head Accessories (1)

序号 NO	公司件号	Part NO	名称	PartName	零件描述	Description	数量	Number
1	1011203100		机头连接钩部件	Hinge component	Hinge component		2	
2	10122060		机头连接钩座	Head connecting rubber cushion	Head connecting rubber cushion		2	
3	10117012		机针DB×1#14	NeedleDB×1#14	NeedleDB×1#14		10	
	10117002		机针DP×5#21 (厚料)	NeedleDP×5#21 (H)	NeedleDP×5#21 (H)		4	
4	101530010		机头连接钩座钉 (P19)	Nail (P19)	Nail (P19)		6	
5	10118003		梭心	Bobbin	Bobbin		2	
6	10111011		机头支柱	Machine head rest pin	Machine head rest pin		1	
7	20731047		螺丝刀 (大)	Screw driver (large)	Screw driver (large)		1	
8	10131003		螺丝刀 (中)	Screw driver (medium)	Screw driver (medium)		1	
9	10131004		螺丝刀 (小)	Screw driver (small)	Screw driver (small)		1	
10	1381101200		油壶组件	Oiler component	Oiler component		1	
11	114131001		防尘罩	Dust cover	Dust cover		1	

10 (2)



10. 机头附件 (2) -线架组件/Machine Head Accessories (2)-Thread Stand Components

序号 NO	公司件号	Part NO	名称	PartName	零件描述	Description	数量	Number
1	20131019		线架杆顶防护橡皮	Spool rest rod rubber cap	Spool rest rod rubber cap		1	
2	504050		螺栓M5 L=16	Screw M5 L=16	Screw M5 L=16		3	
3	W01047		垫圈M5	Washer M5	Washer M5		2	
4	N01034		螺母M5	Nut M5	Nut M5		4	
5	13831022		上线架过线杆	Spool rest arm upper	Spool rest arm upper		1	
6	10113011		过线圈 (内)	Thread guide ring	Thread guide ring (inner)		2	
7	10113010		过线圈 (外)	Thread guide ring	Thread guide ring (outer)		2	
8	13831019		线架杆上节	Spool rest rod upper	Spool rest rod upper		1	
9	13831021		线架杆接头	Spool rest rod joint	Spool rest rod joint		1	
10	13831020		线架杆下节	Spool rest rod lower	Spool rest rod lower		1	
11	10122106		橡胶垫圈	Spool rest rod rubber ring	Spool rest rod rubber ring		2	
12	W01052		垫圈M16	Washer M16	Washer M16		2	
13	N02008		螺母M16	Spool rest rod nut M16	Spool rest rod nut M16		1	
14	504051		螺栓M5 L=31.5	Screw M5 L=31.5	Screw M5 L=31.5		1	
15	N01034		螺母M5	Nut M5	Nut M5		2	
16	W03002		弹簧垫圈 5	Spring washer 5	Spring washer 5		2	
17	13831023		下线架过线杆	Spool rest arm lower	Spool rest arm lower		1	
18	13831024		线盘	Spool rest	Spool rest		2	
19	20131010		线盘垫	Spool rest cushion	Spool rest cushion		2	
20	20131006		线盘钉	Spool pin	Spool pin		2	
21	13831025		线盘防松垫	Spool retainer	Spool retainer		2	
22	1383100300		线架组件	Thread stand asm	Thread stand assembly		1	

杰克缝纫机股份有限公司

杰克缝纫机
全球销量遥遥领先

公司地址(Address of Company) :

中国浙江省台州市椒江区三甲东海岸大道东段1008号

NO.1008, DONGHAI AVENUE EAST, JIAOJIANG DISTRICT,TAIZHOU CITY, ZHEJIANG

邮编(Zip Code) : 318000

国内销售部(Domestic Trade Department):

电话(TEL): 0086-0576-88177788 88177789

传真(FAX): 0086-0576-88177758

国际贸易部(International Trade Department):

电话(TEL): 0086-0576-88177782 88177774

传真(FAX): 0086-0576-88177787

服务热线: 400-8876858

http://www.chinajack.com

资料如有更改, 恕不另行通知, 以实物为准。

You will be not informed if the file has been revised.Please set sample as standard.

日期: 2020.12



请您扫下杰克服务号